



Bimonthly General Membership Meeting

Wednesday, September 21, 2022

Agenda

- Introductions
- Steering Committee Vacancy
- Member Discussion Forum: Prop 1, Round 2
- DWR Updates
- Advocacy Updates
- Working Session: Member Presentation Outline
- Member Open Forum
- Adjourn

Introductions



- Co-Chairs
- WSC – Network Coordinator

Everyone type your name and agency in the chat

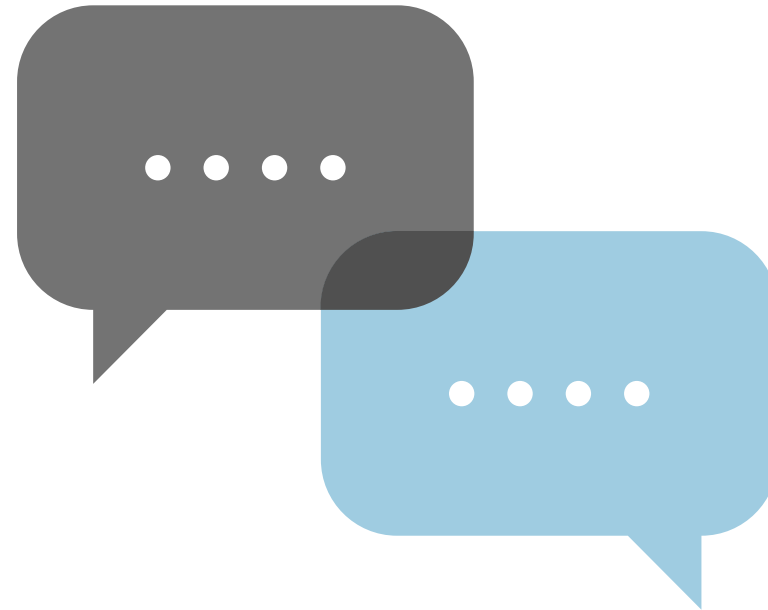
Steering Committee Vacancy



- Currently have one vacancy
- What does the role entail?
- Solicitation timing input

Member Discussion Forum: Prop 1, Round 2

- Wins and Challenges
- Tips and Best Practices
- Problem Solving



DWR Updates

Advocacy Updates

Jenna Voss and Lynn Rodriguez

Working Session: Member Presentation Outline

- **Member presentation at each General Membership Meeting**
- **Share wins, best practices, ideas, potential collaboration, etc.**
- **Provide outline with standard questions**
 - **What do members want to know?**
- **Volunteers for November meeting?**

Member Open Forum



Adjourn

Next Meeting: November 16, 1:30-3:30 p.m.

CALIFORNIA DEPARTMENT OF WATER RESOURCES

Watershed Resilience Initiative IRWM Roundtable of Regions

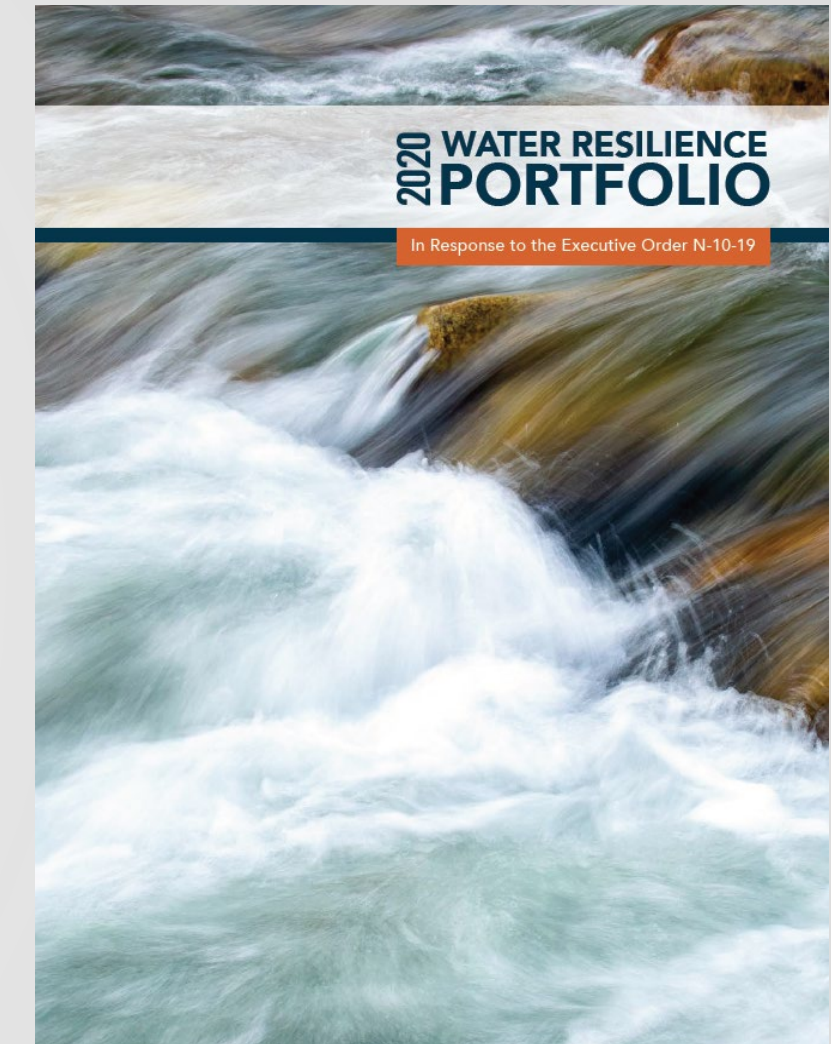
September 21, 2022



Water Resilience Portfolio Cornerstone

Advance Implementation of Portfolio Actions & Focus on Regional Resilience

- EO N-10-19 Principle - “Encourage **regional approaches** among water users sharing **watersheds**”
- Action 20 - Support groups and leaders in each of the state’s **regions** to develop and execute **integrated water resilience strategies**
 - Action 20.1 Build on the Integrated Regional Water Management Program and other regional efforts to align climate scenarios and expand watershed-scale coordination and investments that contribute to water resilience. Emphasize integrated, multi-sector, and outcome-based planning, action, and monitoring.
- Action 27.1- Support regional decision making with watershed-scale climate vulnerability and adaptation assessments...

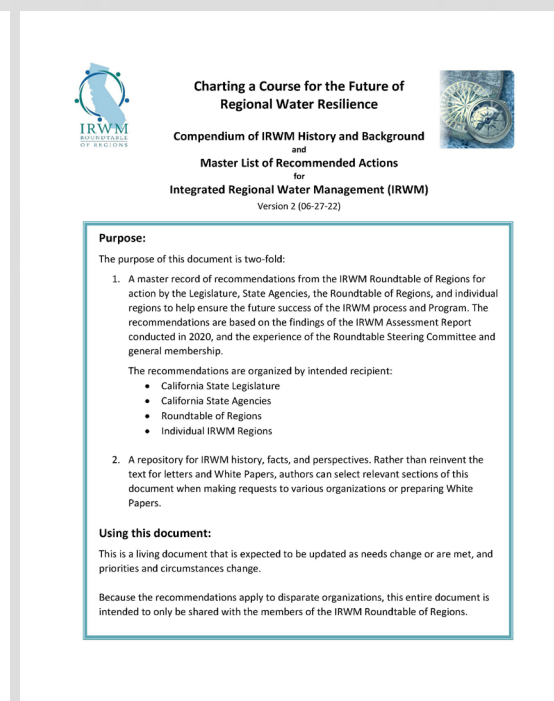
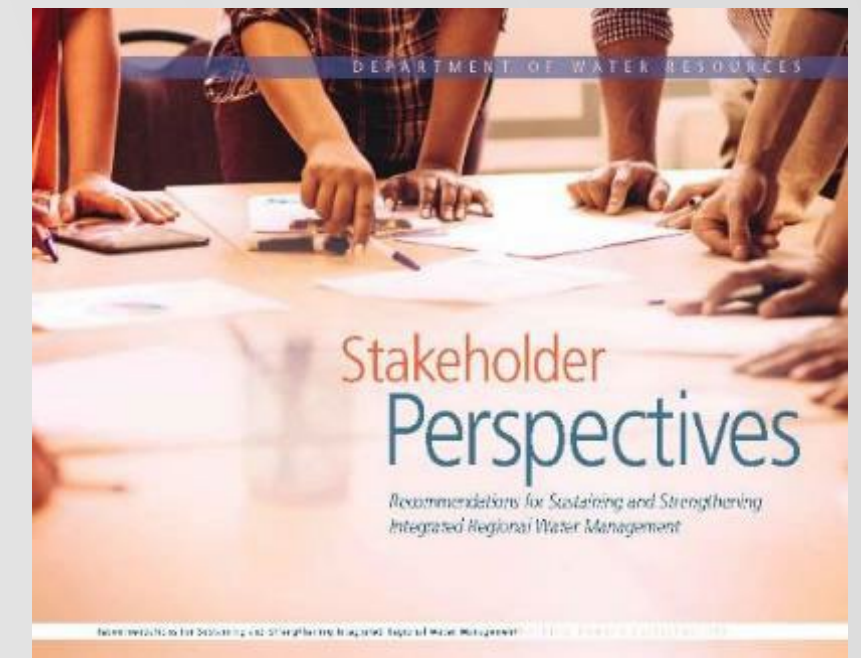


How can the State best support regional climate resilience?



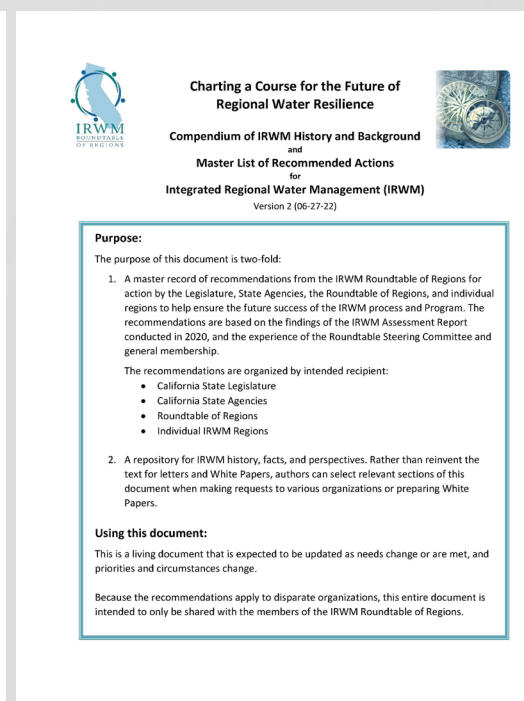
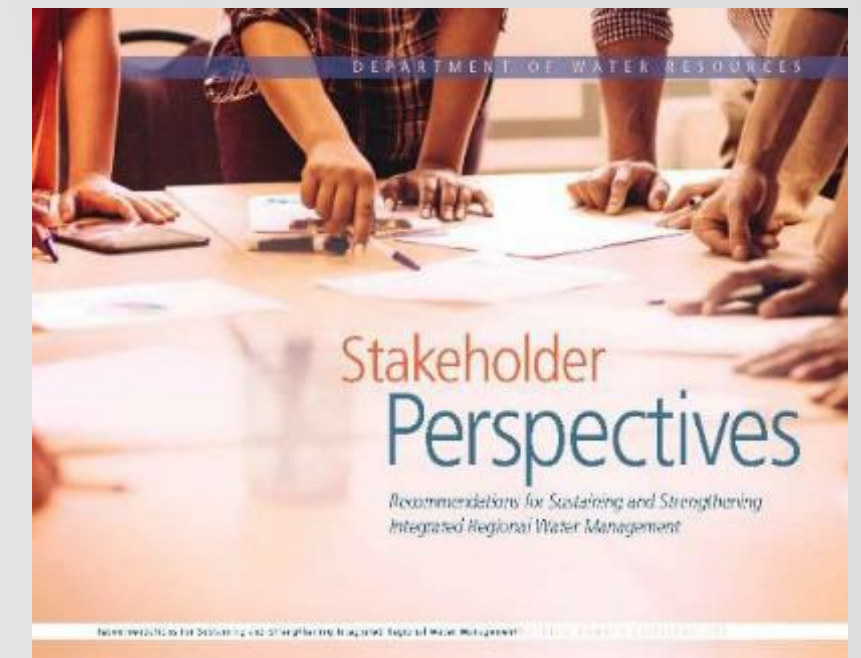
RoR Recommended Actions for IRWM

- Focus on increasing climate resilience
- IRWM as practice (not just a grant program)
- Multi-sector collaboration: Forest, Fire, Flood, Groundwater
- Upscaling IRWM: Explore upper watershed, systemwide opportunities/solutions
- Networks, Regional Groups and Partnerships (Trust and relationships)



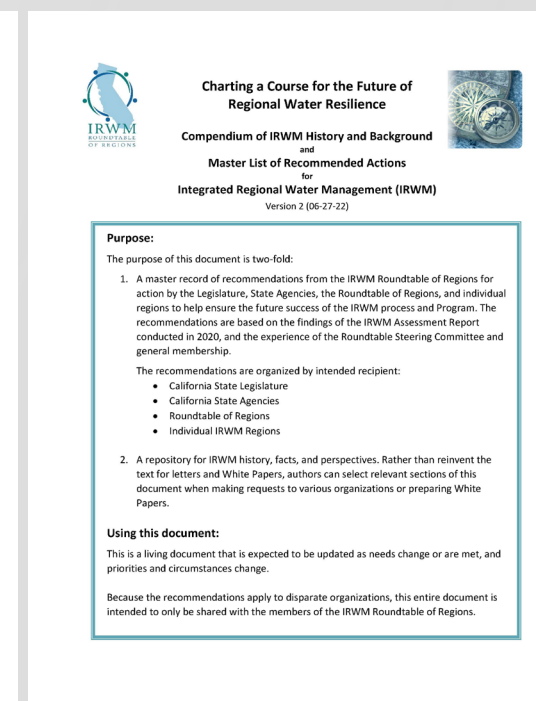
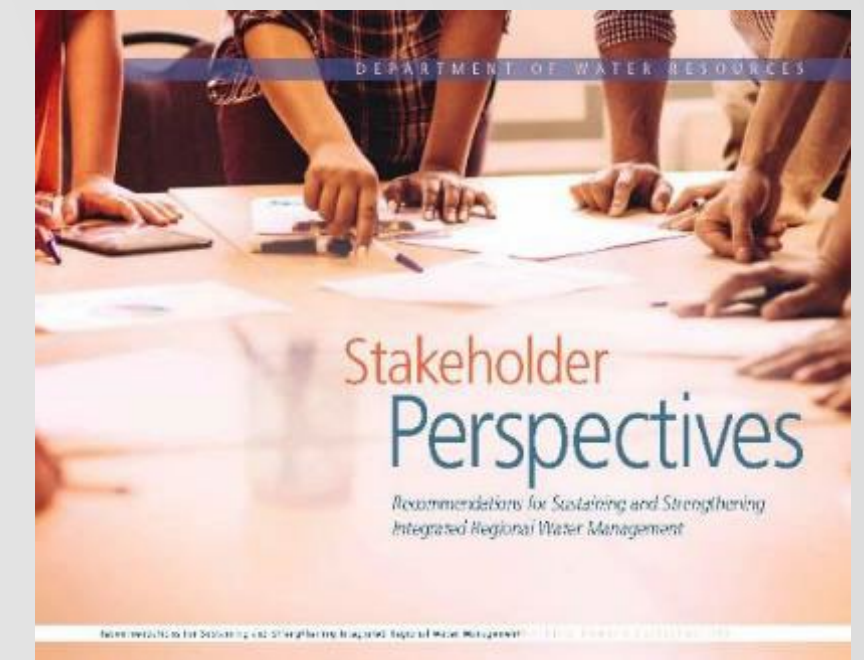
RoR Recommended Actions for IRWM

- State Role
 - State agency alignment (e.g., “Climate Resilience Forum”)
 - Need for technical support
 - Need for Regional Service Representatives
- Tools
 - Regional Atlas
 - Sustainability Outlook/Performance Tracking
 - Online repository/knowledge base of tools/best practices



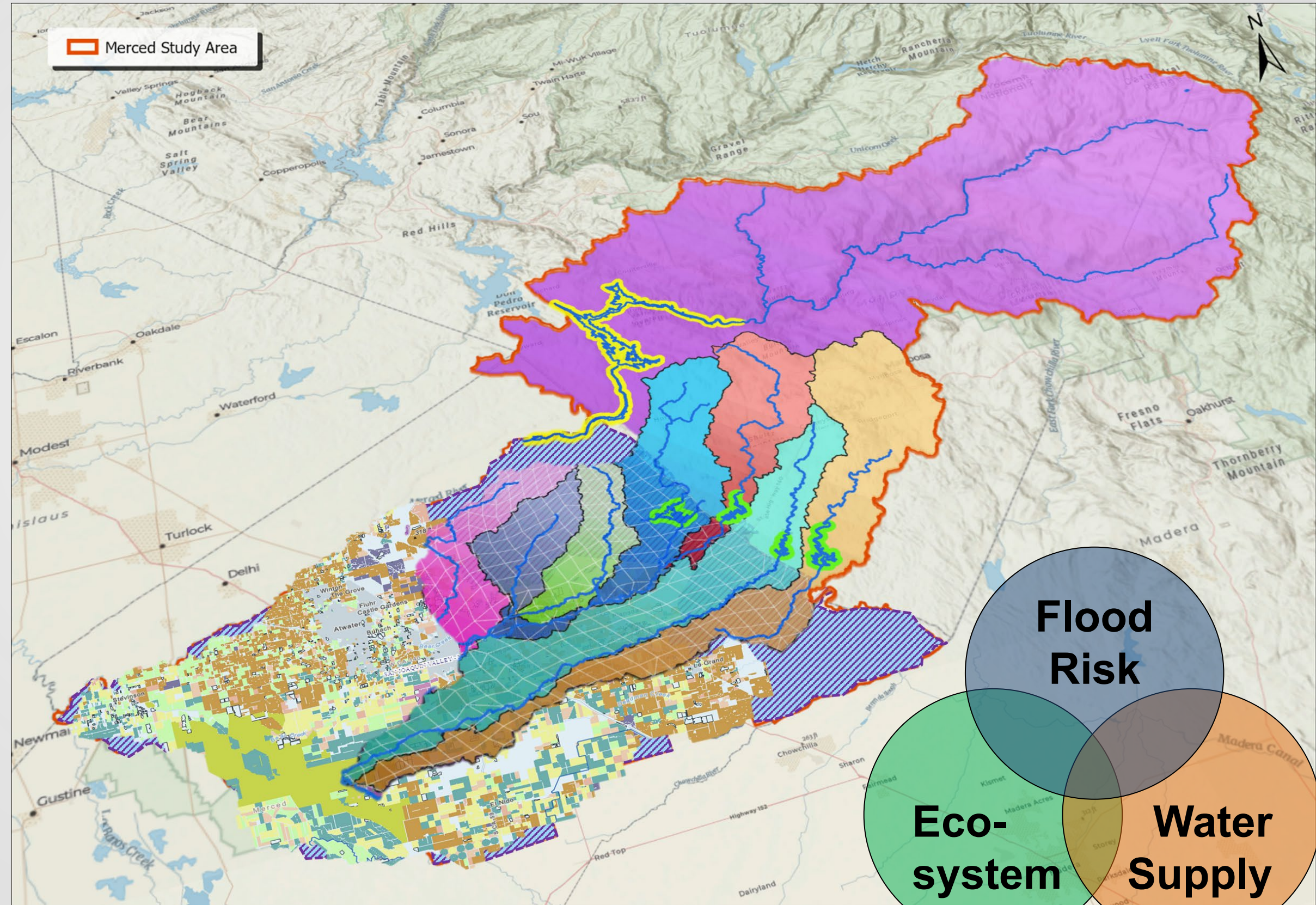
RoR Recommended Actions for IRWM

- Funding
 - Need for regional planning funding
 - Prioritize funding based on resource management needs- including upper watersheds
- Diversity and Equity
 - Tribal Participation (and funding)
 - Disadvantaged, under-represented community participation (and funding)
 - Need to expand/diversify the table to include underrepresented sectors, communities, and Tribes



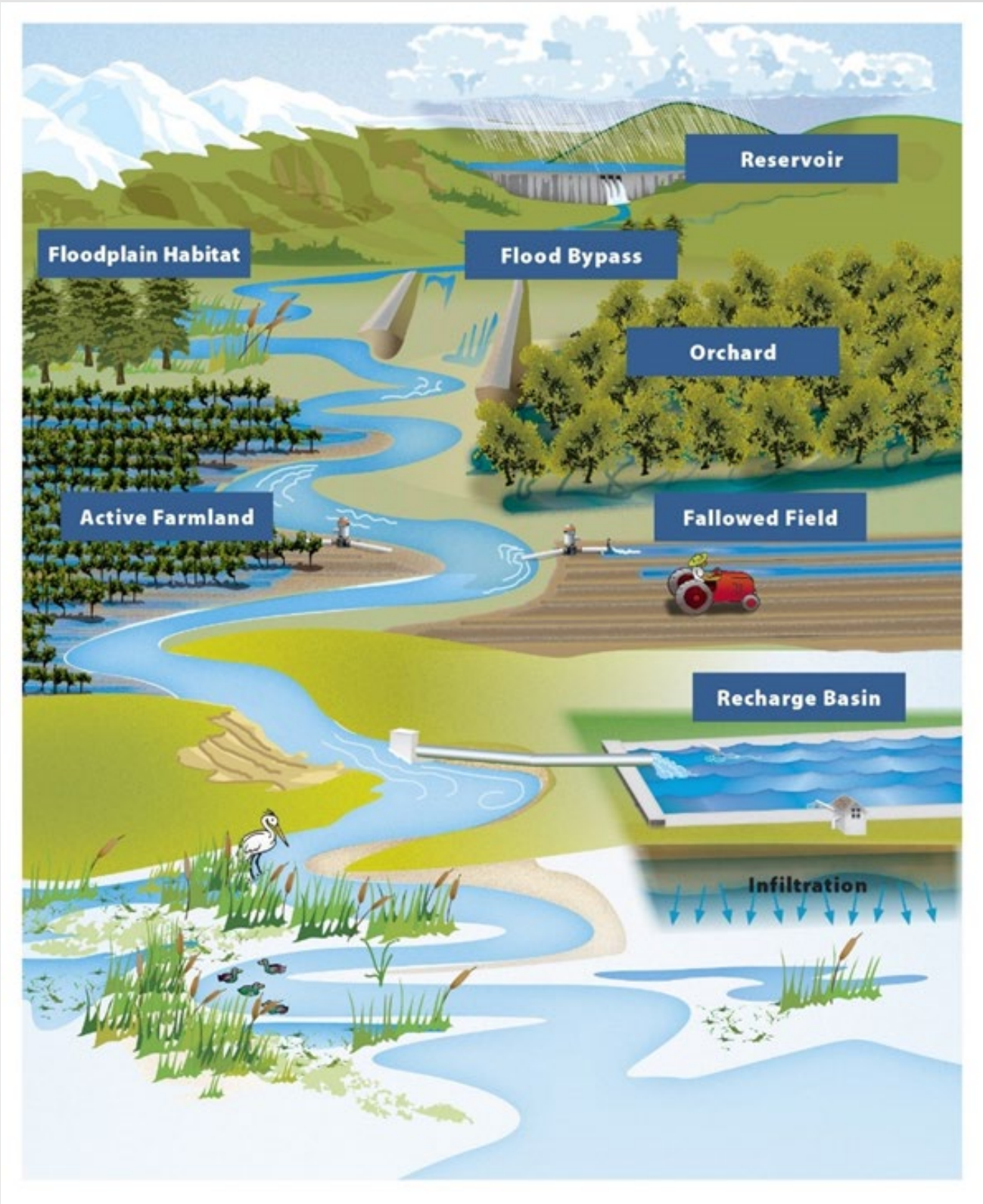
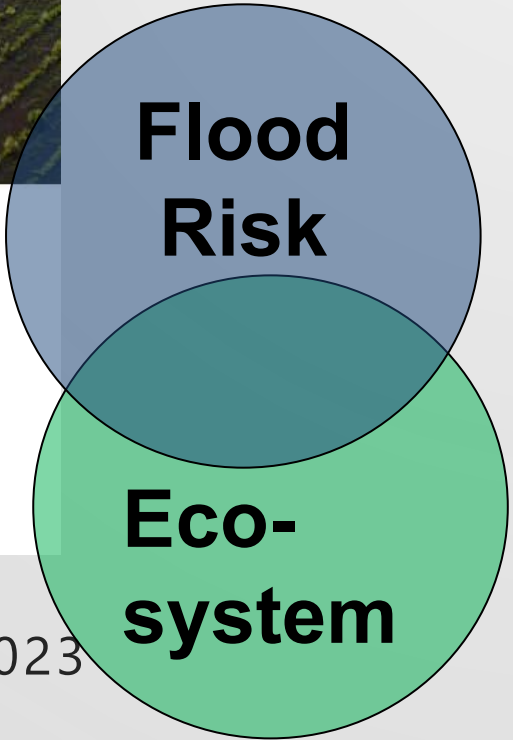
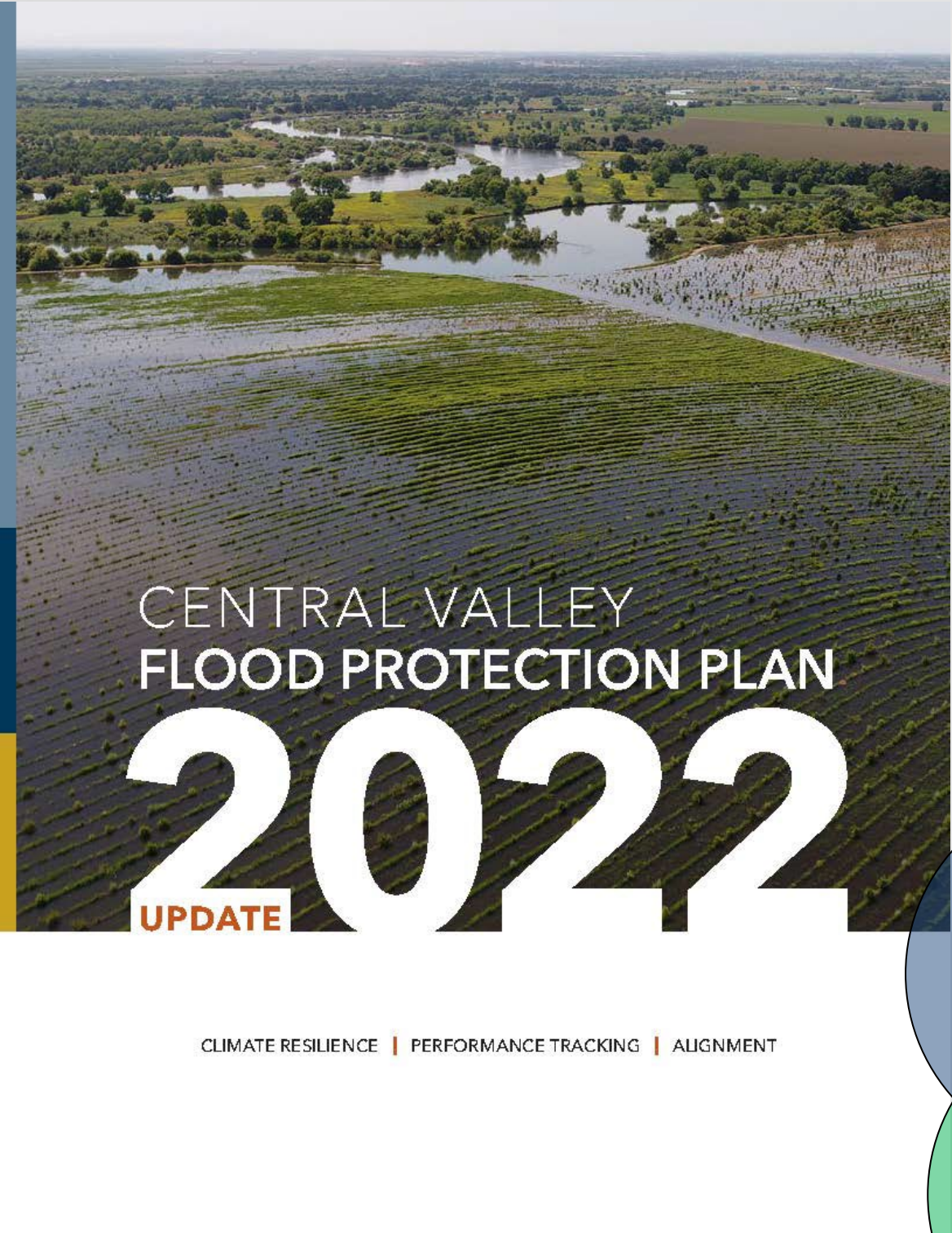
Merced Watershed Study

- Integrated Watershed Modeling
- Vulnerability Assessment
- Evaluate multi-sector adaptation strategies
- Template for future San Joaquin watershed studies



CVFPP

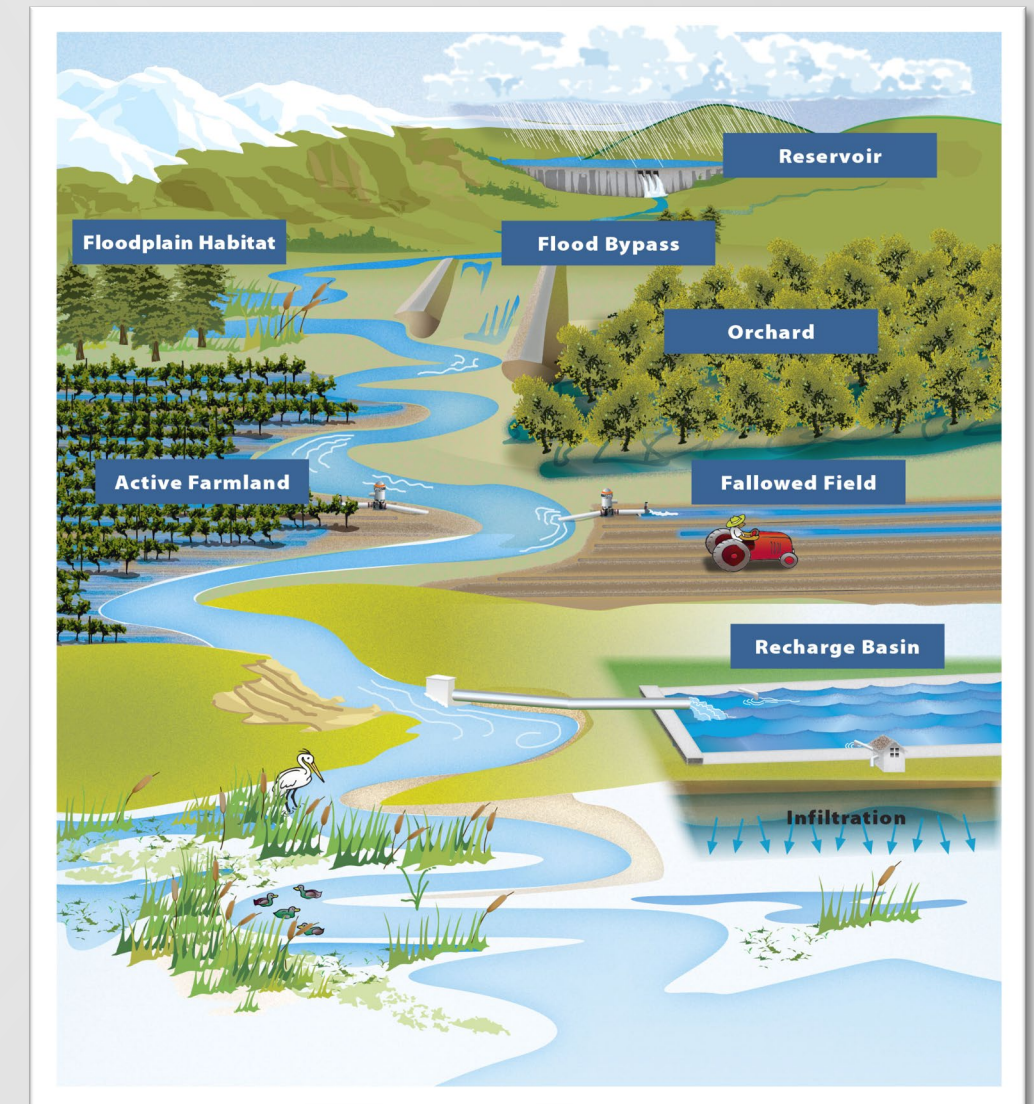
Flood-MAR Network



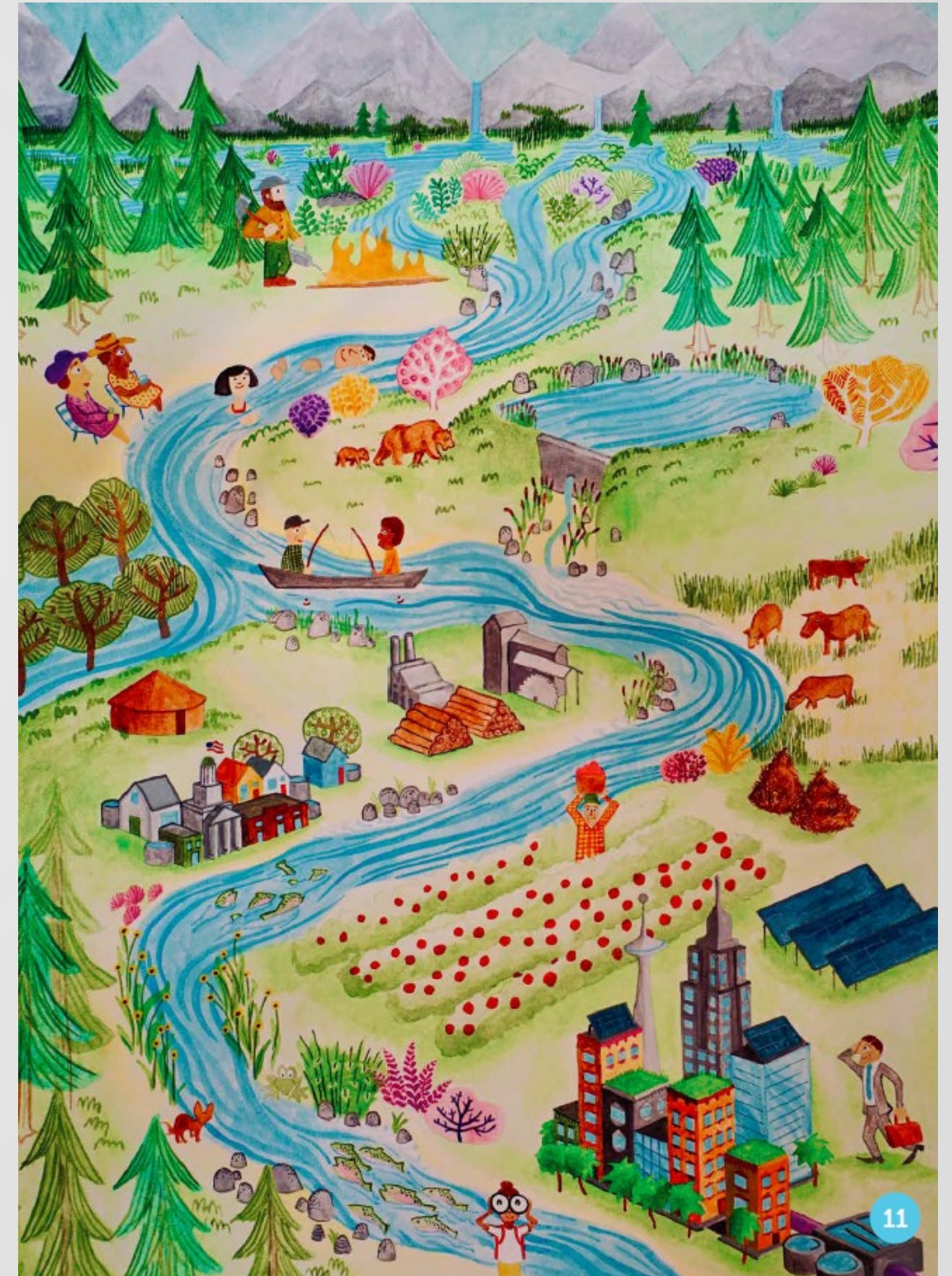
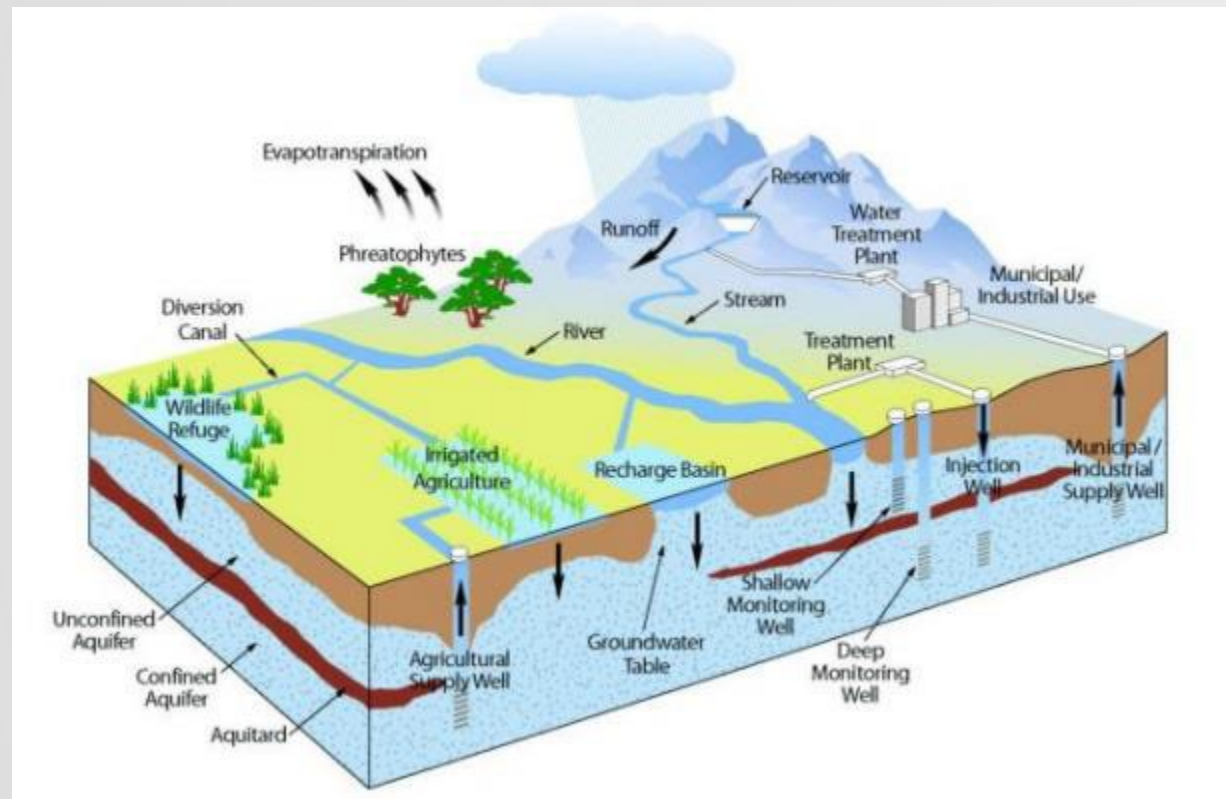
State's Focus on Watershed Resilience

- Systems Approach to Water
- Align Human Activities with Natural Systems
- Common Thread across Water/Land Sectors and IWM

DWR is orienting our data/analytics, technical support, and outcomes tracking with a focus on watersheds.

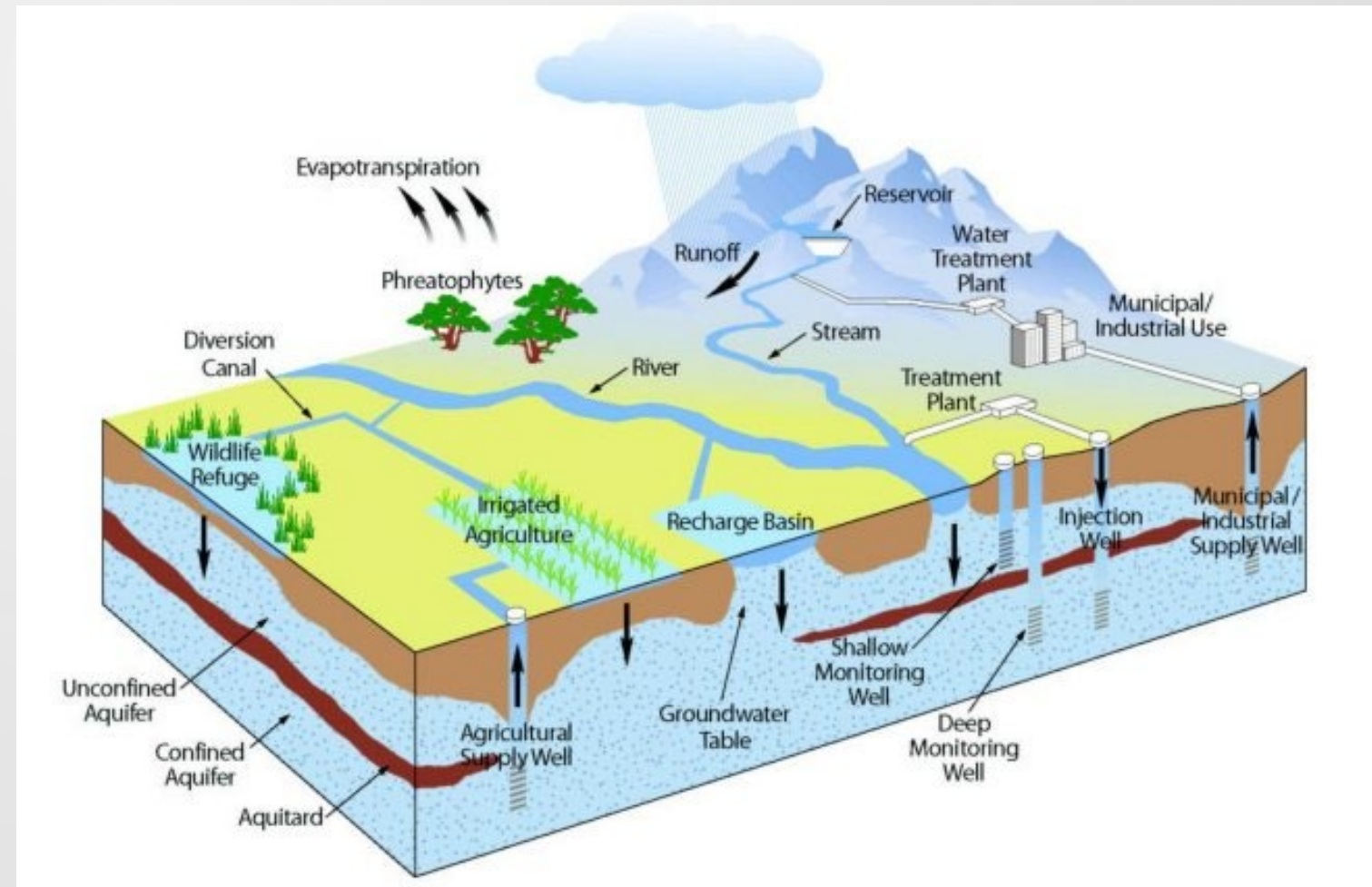


Sustainable, Resilient and Equitable Watersheds



Watershed Resilience Initiative Goal

Increase regional climate resilience through integrated water management at watershed scales



Watershed Resilience Principles

- 1. Build a Robust Understanding of Climate Risks and Embrace Uncertainty**
- 2. Promote Multi-Sectoral, Multi-Benefit Resilience Strategies**
- 3. Focus on Watersheds**
- 4. Recognize the Interdependencies of Water Resource Systems**
- 5. Build and Strengthen Watershed Networks**
- 6. Integrate and Prioritize Equity and Social Justice:**
- 7. Develop and Utilize Best Available Science**
- 8. Promote Best Practices, Approaches, and Tools for Climate Resilience Planning**
- 9. Identify and Explore a Wide Spectrum of Adaptation Options**
- 10. Outcomes-Based Management**
- 11. Move the Needle**



Watershed Networks

Potential Participants

-  Groundwater Sustainability Agencies
-  Integrated Regional Water Management Groups
-  Regional Climate Collaboratives (ARCCA)
-  Regional Conservancies
-  Regional Conservation Investment Strategies and Natural Community Conservation Planning
-  Regional Flood Management Groups (Central Valley)
-  Regional Forest and Fire Capacity Groups
-  Other participants, for example tribes and other local agencies



Watershed Resilience Initiative-Related Products for CWP Update 2023

- Statewide Climate Change Risk and Preparedness Assessment
- Watershed Resilience Framework and Toolkit
- Watershed Performance Tracking Hub
- CWP Update watershed resilience chapter



Watershed Resilience Assessment Objectives

- Better understand where and what type of risks exist in California's watersheds
- Improve understanding the state of resilience preparedness Statewide
- Inform scoping of the Watershed Resilience Initiative and how the State can best coordinate, support, and partner with local/regional partners in improving their climate resilience

Climate Vulnerability



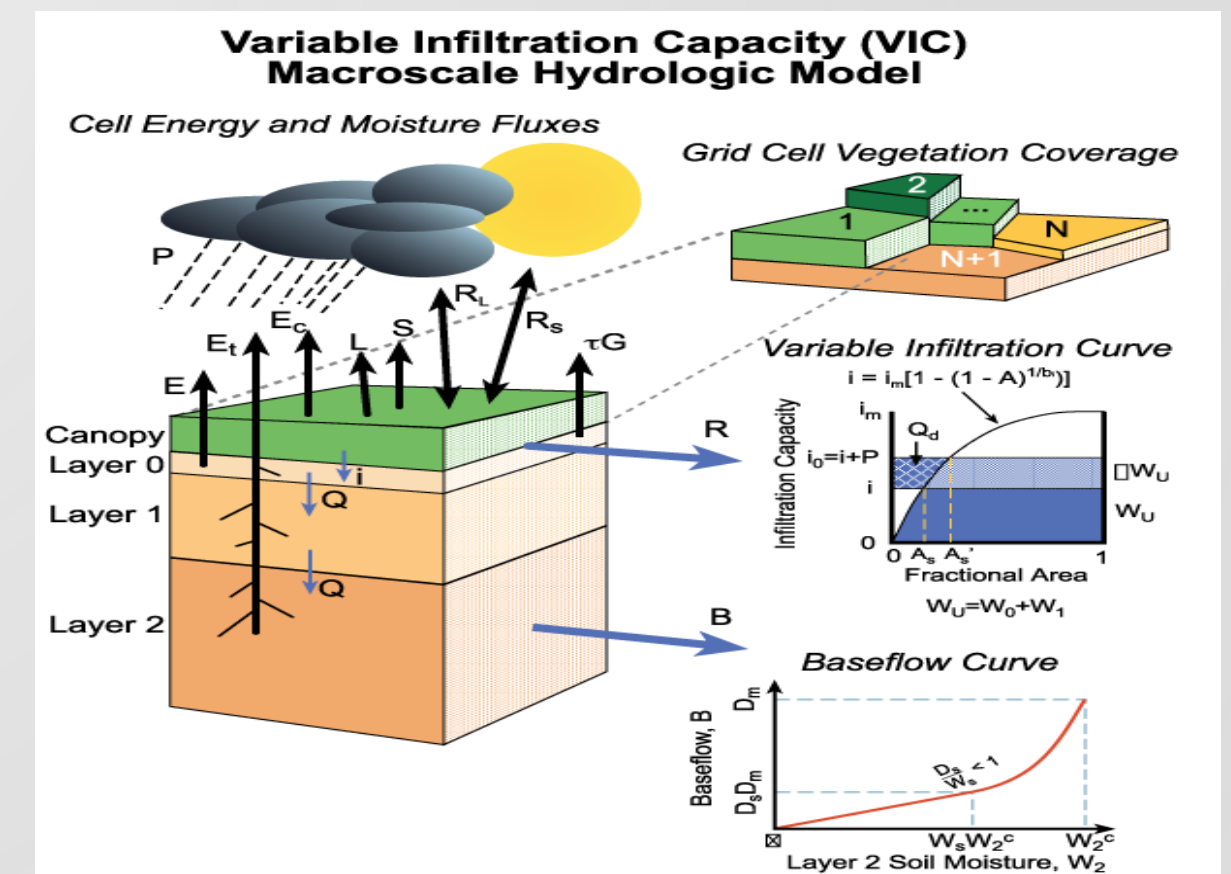
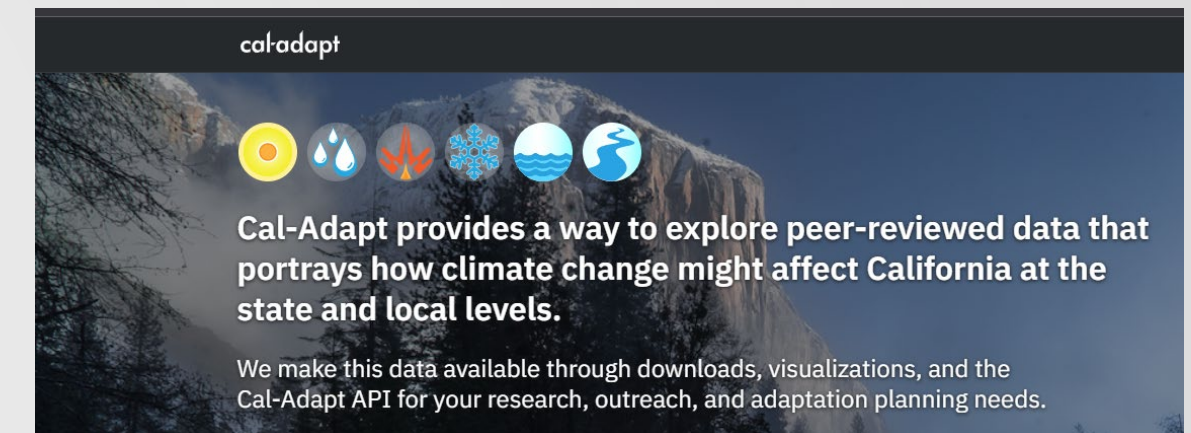
Climate Preparedness

≈ Climate Risk



Watershed Resilience - Climate Vulnerability

- Resources and Tools
 - CMIP5 projections from CCTAG (20 projections)
 - Cal-Adapt hosted data sets derived from these projections
 - OPC-consistent sea-level rise projections
 - Various specific data sets for recreation, hydropower, and drought analyses
 - Analytical processing and assessment for metrics



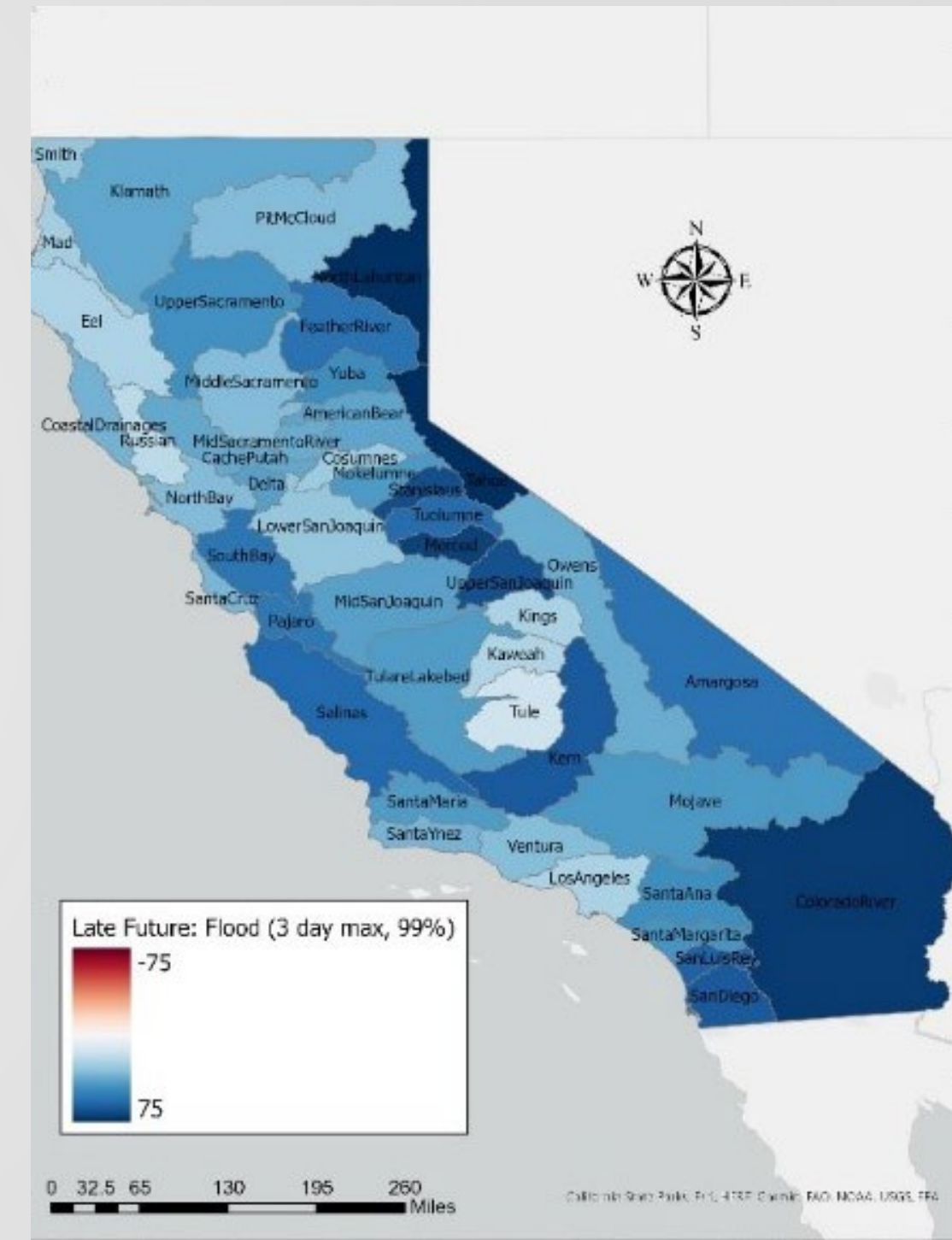
Statewide Climate Change Risk and Preparedness Assessment

- Vulnerability

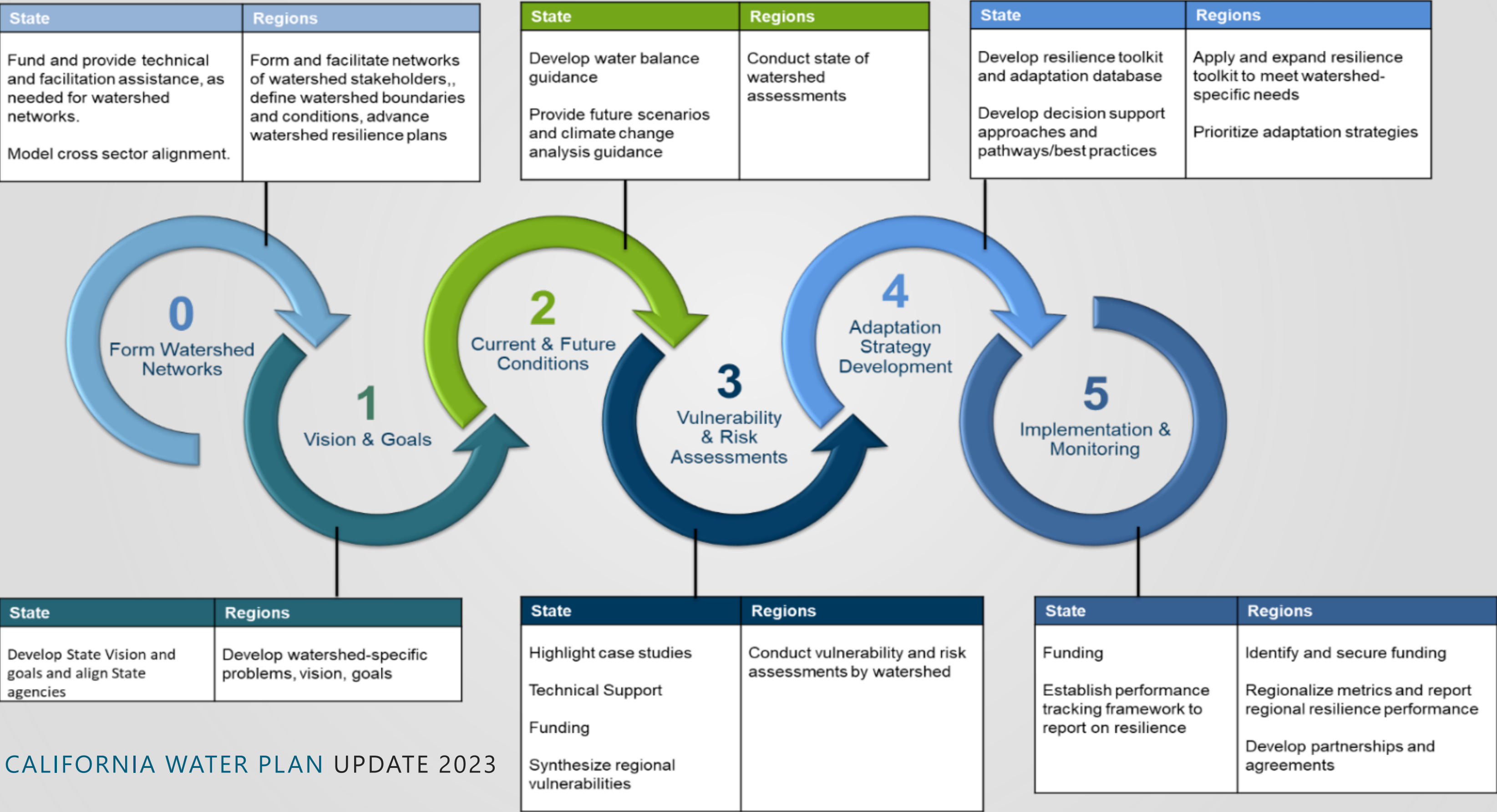
- Water Supply
- Flood Management
- Groundwater
- Ecosystems
- Water Quality
- Recreation
- Hydropower
- Drought
- Wildfire

- Preparedness

- Reviewed over 800 plans for:
 - Collaboration
 - Staffing for Climate Resilience
 - Identified Climate Impacts
 - Vulnerability/Risk Assessments
 - Adaptation Strategies
 - Funding and Implementation



Watershed Resilience Framework and Toolkit



Watershed Hub Integrates Existing Tools

Regional Atlas

- Sharing accomplishments and value of past State and local investments
- Communicating regional/local anticipated future projects, needs, and priorities
- Collaborating on regional and statewide investments
- Building relationships among DWR and regional and local participants

Sustainability Outlook

- Tracking and reporting progress and trends toward sustainable and resilient water management through indicators and metrics
- Supports climate resilience planning and adaptive management

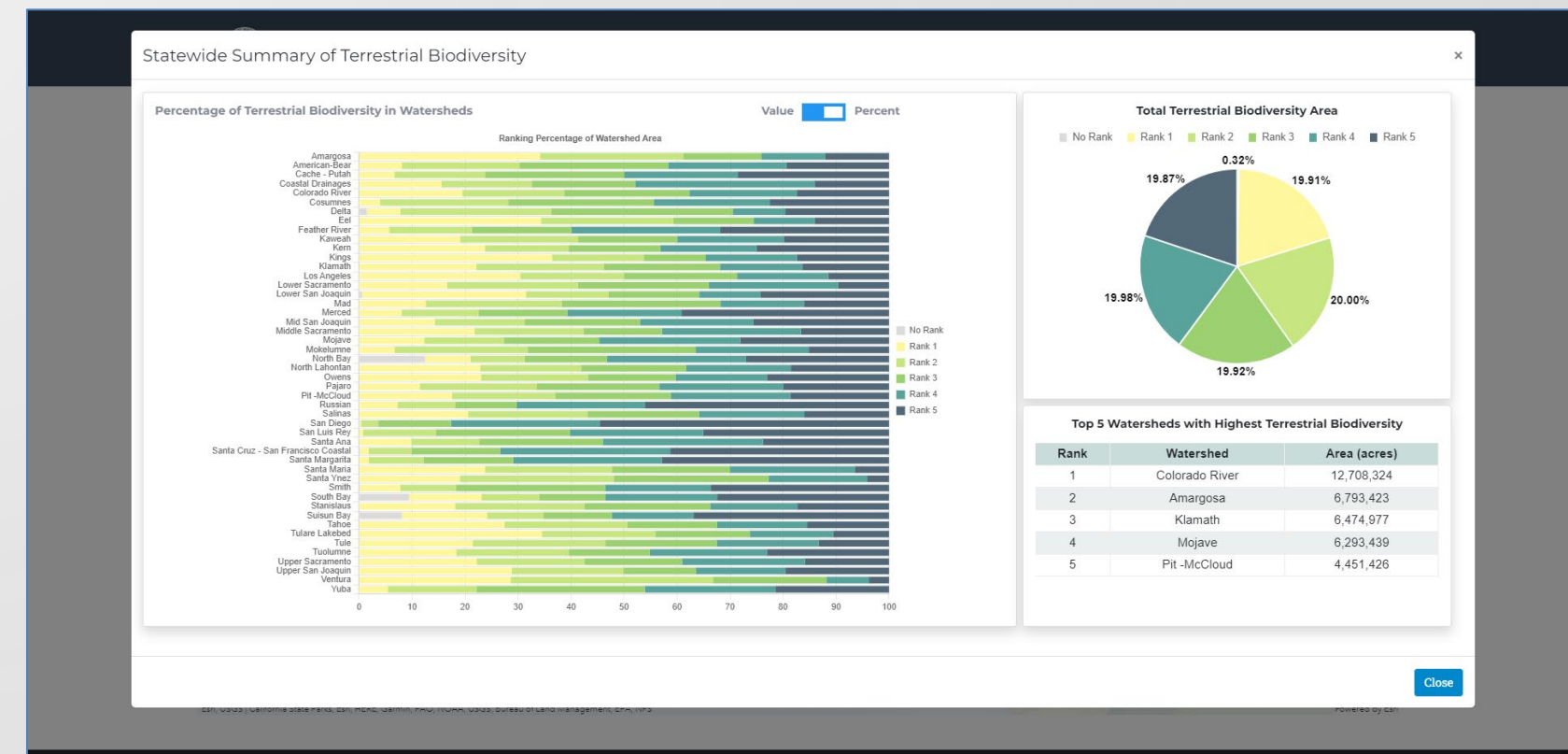
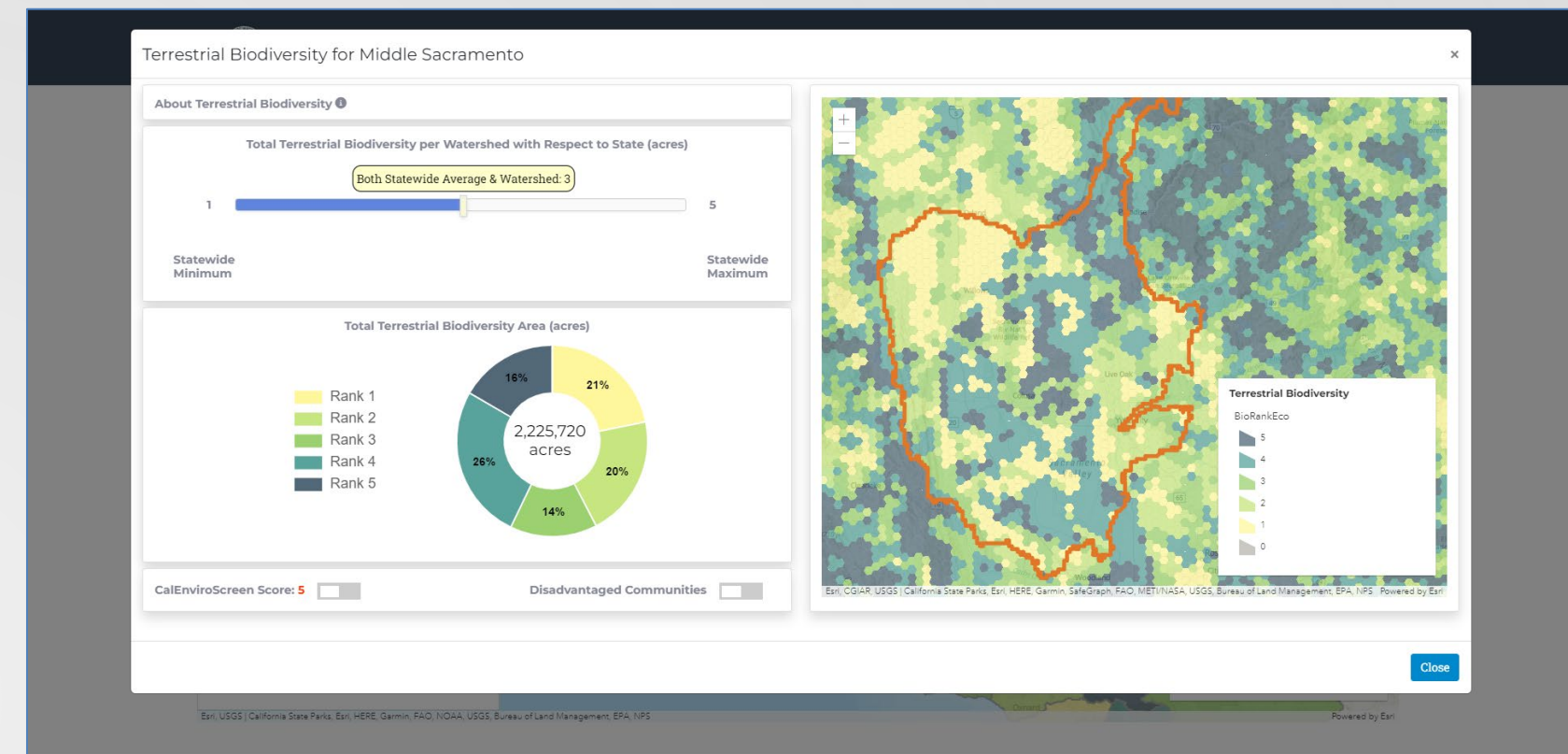


Conceptual Hub Architecture



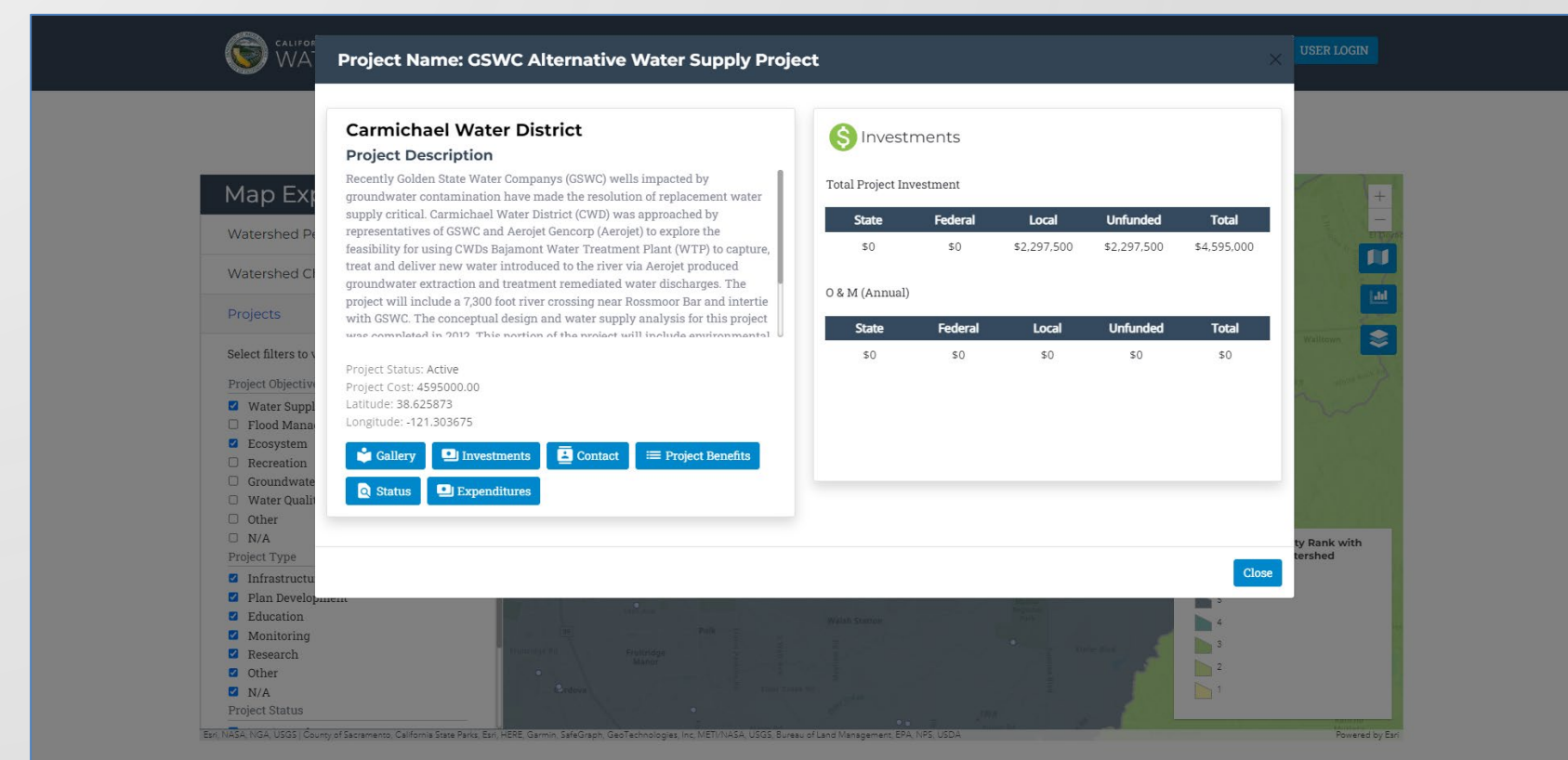
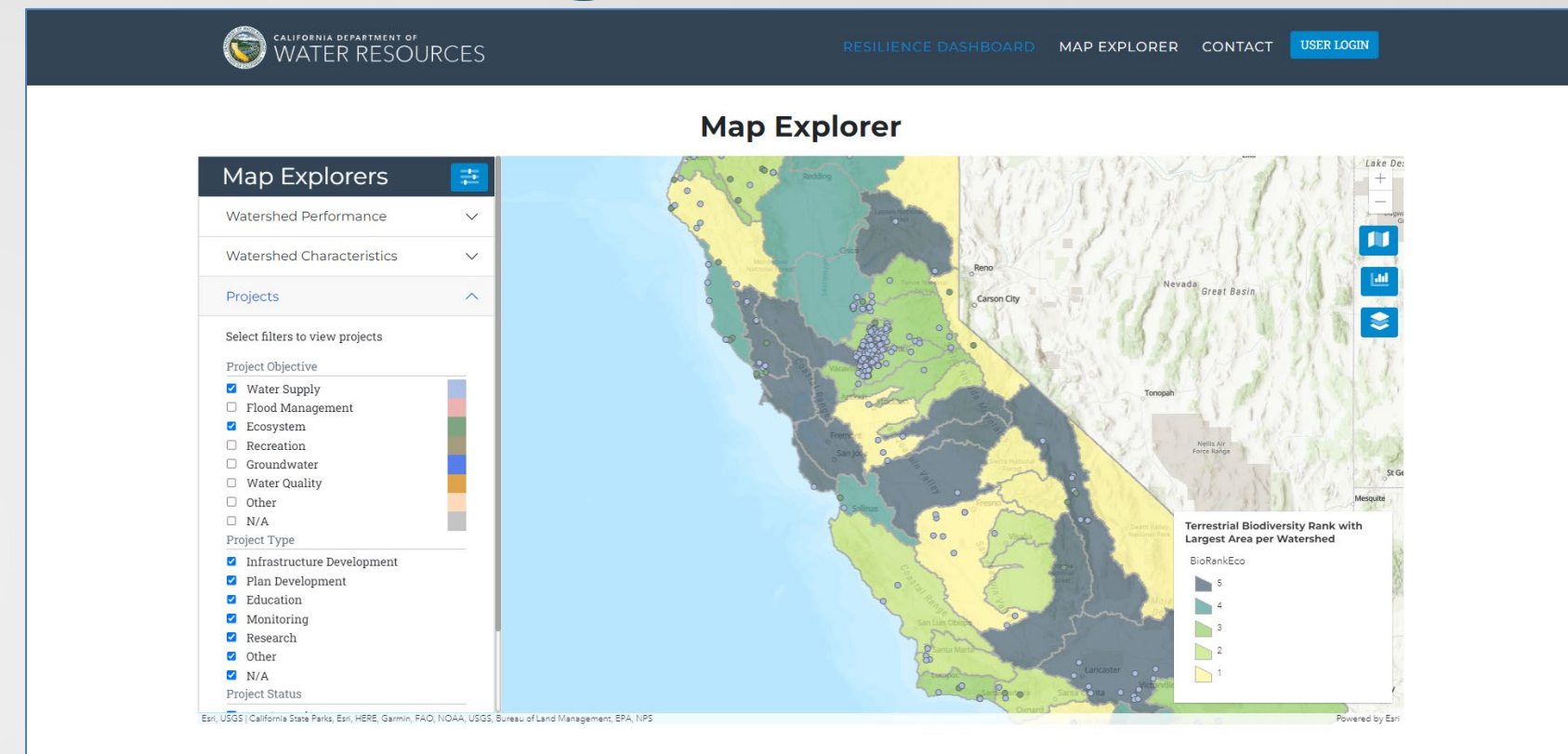
The Watershed Hub is a One-of-a-Kind Performance Tracking Portal

- Provides a flexible platform with built in analytics to answer questions related to sustainability and resiliency
- Summarizes performance tracking metrics at the watershed scale and statewide
- Intersects equity data
- Will allow for tracking of performance metrics over time



The Watershed Hub is Integrated with the Atlas to Support Decision Making

- Overlies local/regional projects (directly from the Atlas) with performance tracking metrics
- Helps identify investment opportunities based on local environmental conditions and needs
- Can be linked to IRWM Regional Summaries (in the Atlas) to communicate local challenges and accomplishments impacting the watershed
- Will summarize project data and performance metrics at the watershed level to support regional reporting



Additional Funding for Watershed Resilience

To be allocated to the Department of Water Resources as follows:

(A) \$66,500,000 for watershed climate resilience grants.

(i) These funds shall be provided as grants to water agencies and other public agencies for drought resilience and identification and assessment of climate risks on a watershed basis.

(ii) These funds shall be prioritized in areas with greatest risk or potential to reduce environmental conflicts. Funds may be used for longer-term planning and resilience projects, including but not limited to, watershed climate risk assessment, streamflow improvement projects, streamflow measurement and remote sensing to establish baseline conditions and monitor project performance, water use efficiency projects with verifiable demand reduction, infrastructure to improve regional flexibility to address drought conditions, and conjunctive use and management between multiple water supply sources.



Watershed Resilience Initiative: Desired Outcomes

- Robust recognition of climate vulnerabilities at the watershed scale
- Support unique locally-led networks across California's diverse regions
- Promote and achieve resilience at the watershed scale



How can we continue to partner and build on accomplishments and common ground to work towards sustainable, resilient and equitable watersheds?

- Climate Resilience
- IRWM as practice
- Multi-sector collaboration: Forest, Fire, Flood, Groundwater
- Upper watershed/systemwide opportunities
- Networks, regional groups, partnerships
- Regional Service Representatives
- State agency alignment/ “Climate Resilience Forum”
- Regional Atlas
- Sustainability Outlook
- Online repository/knowledge base
- Funding
- Diversity and Equity
- Tribal
- Disadvantaged, Under-represented communities
- Expand/Diversify the table



QUESTIONS

APPENDIX SLIDES

Watershed Resilience – Draft Metrics

Vulnerability Indicator Metrics		Methods
Water Supply Projected changes in average and lower quartile annual and seasonal available water supply Projected changes in drought severity		VIC-derived unimpaired flow aggregated to months and years in future period and compared to historical period. Percent change in annual average flows, seasonal (Oct-Jun) average flows, and lower quartile annual flows. Drought risk characterized as percent change in the computed Standard Precipitation Evaporation Index (SPEI) and the hydrologic drought severity index.
Flood Management Projected changes in 1% annual unregulated flood		VIC-derived 3-day unimpaired flow in future period compared to historical period. Percent change in 1% annual exceedance probability flows at watershed outlet.
Groundwater Projected changes in average and lower quartile groundwater recharge		Groundwater recharge estimated from VIC-derived fluxes (infiltration) in future period compared to historical period. Percent change in annual average recharge and lower quartile annual recharge flows.
Water Quality Projected changes in stream temperature and dissolved oxygen		Using results derived from river temperature modeling (Reclamation 2014 and Fickler et al 2015) and correlation matrices with air temperature and snowmelt and groundwater fluxes, stream temperature changes are estimated. Future changes compared to historical monthly highest decile stream temperature are computed. Change in frequency of exceeding historical temperature threshold is computed. Similar correlation method for dissolved oxygen changes will be used.
Ecosystem Projected changes in seasonal lows flows and variability		Changes in monthly and seasonal low flows, measured as the lowest quartile, in the future period compared to the historical period. Seasonal flow variability changes will be computed as the flow variance over the months within each season.
Hydropower Projected changes in hydroelectric generation for major facilities		Major hydroelectric generation facility in each watershed will be used as surrogate for this indicator. Projected changes in inflows combined with storage-elevation and generation relationships from existing models will be used to characterize the relative change on hydropower.
Recreation Projected changes in river, lake, snow, and coastal recreation resources		Projected changes in river recreation opportunities indicated by changes in number of days that flow is lower or higher than the historical 25 th to 75 th percentile flows during the May through September period. Projected changes in lake recreation opportunities indicated by changes in average water surface area of representative major reservoir during the May through September period. Projected changes in snow recreation opportunities indicated by changes in number of days with snow in designated recreational areas during the November through June period. Projected changes in coastal recreation opportunities indicated by changes in beach area associated with sea level rise.





Managing Water Resources for Sustainability & Resilience

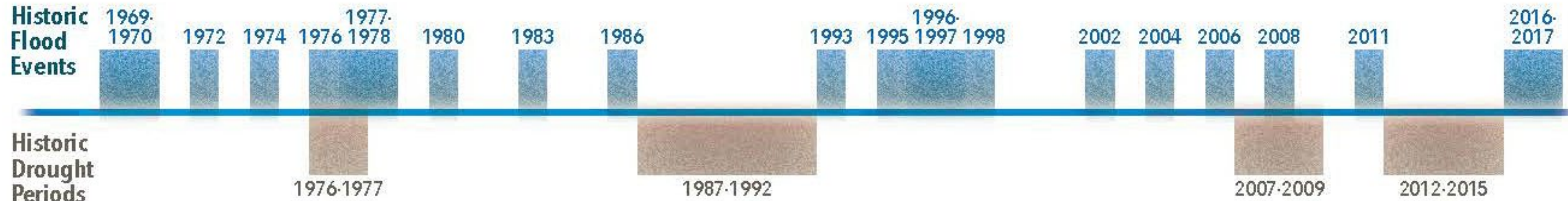
Roundtable of Regions

September 21, 2022



California's Water Management

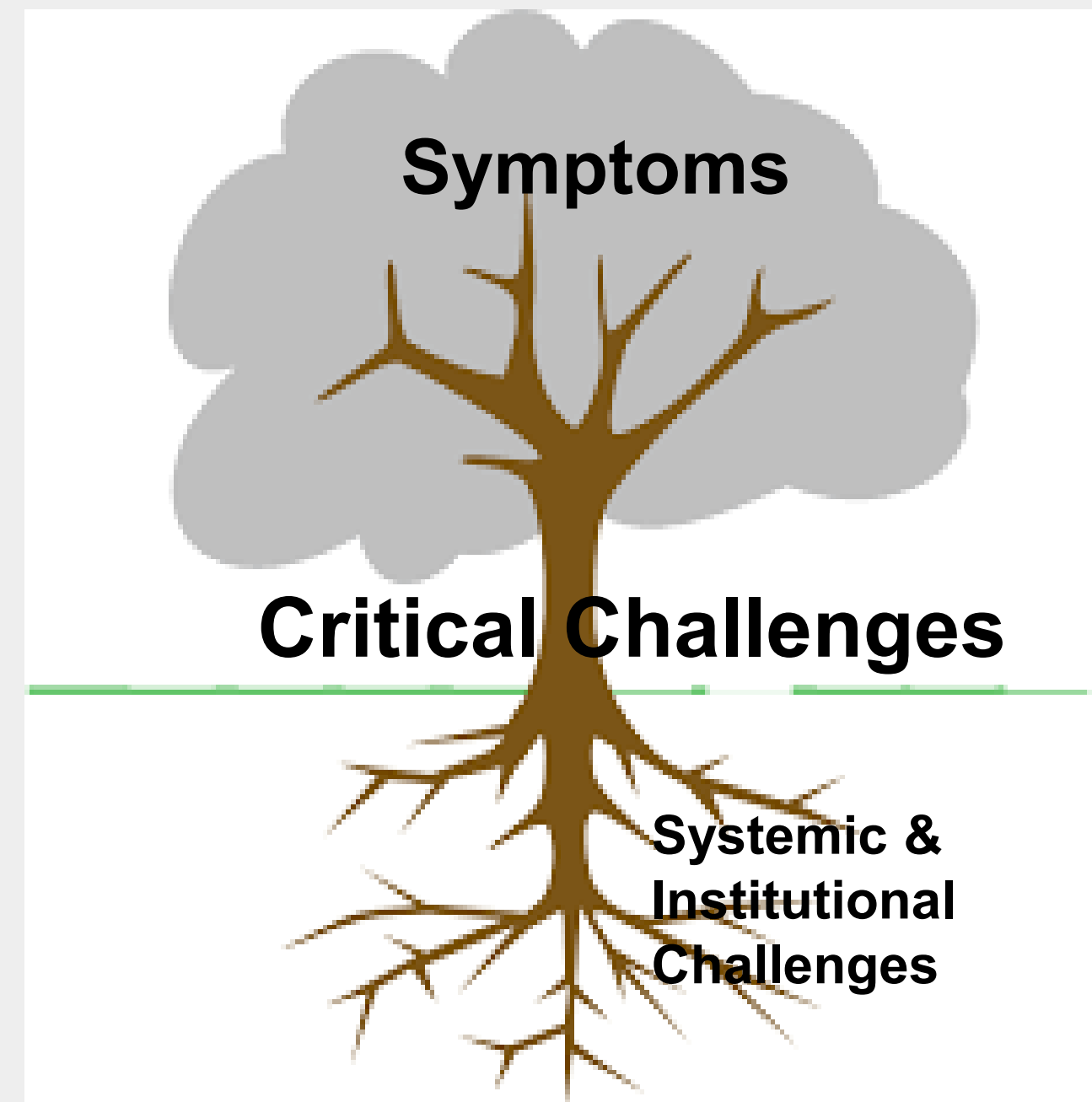
A Tale of Extremes



Systemic & Institutional Challenges

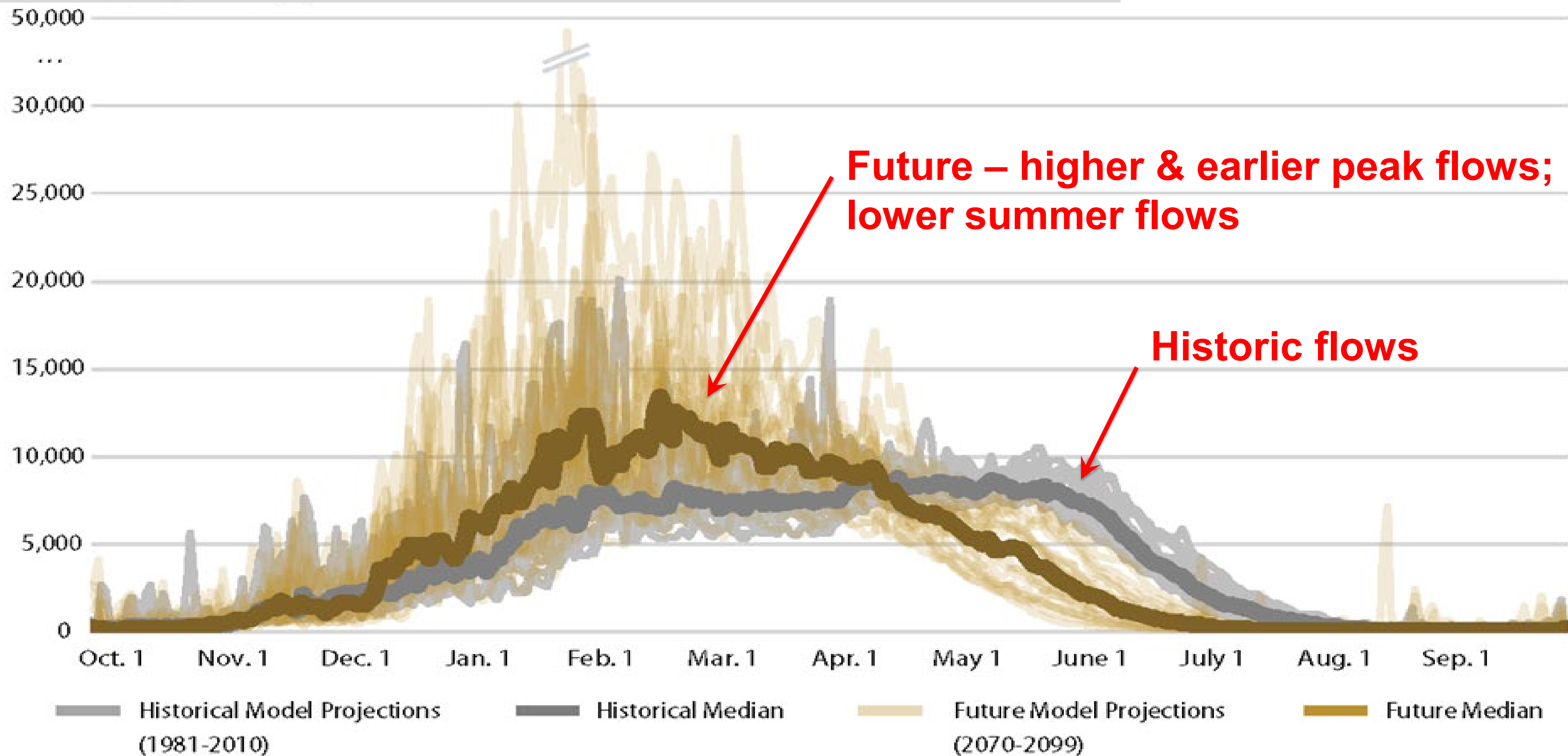
Overcoming them Increases Return on Investment

- ❖ Fragmented and uncoordinated decisions, initiatives & actions
- ❖ Inconsistent, inflexible, & conflicting regulations
- ❖ Insufficient capacity for data-driven decisions
- ❖ Insufficient & unstable funding
- ❖ Inadequate performance tracking
- ❖ Inequities in water management decisions, benefits, and impacts



Effects of Climate Change Requires Wholesale System Changes

American River Simulated Flows (cfs) – Historic (Grey) & Future (Amber)



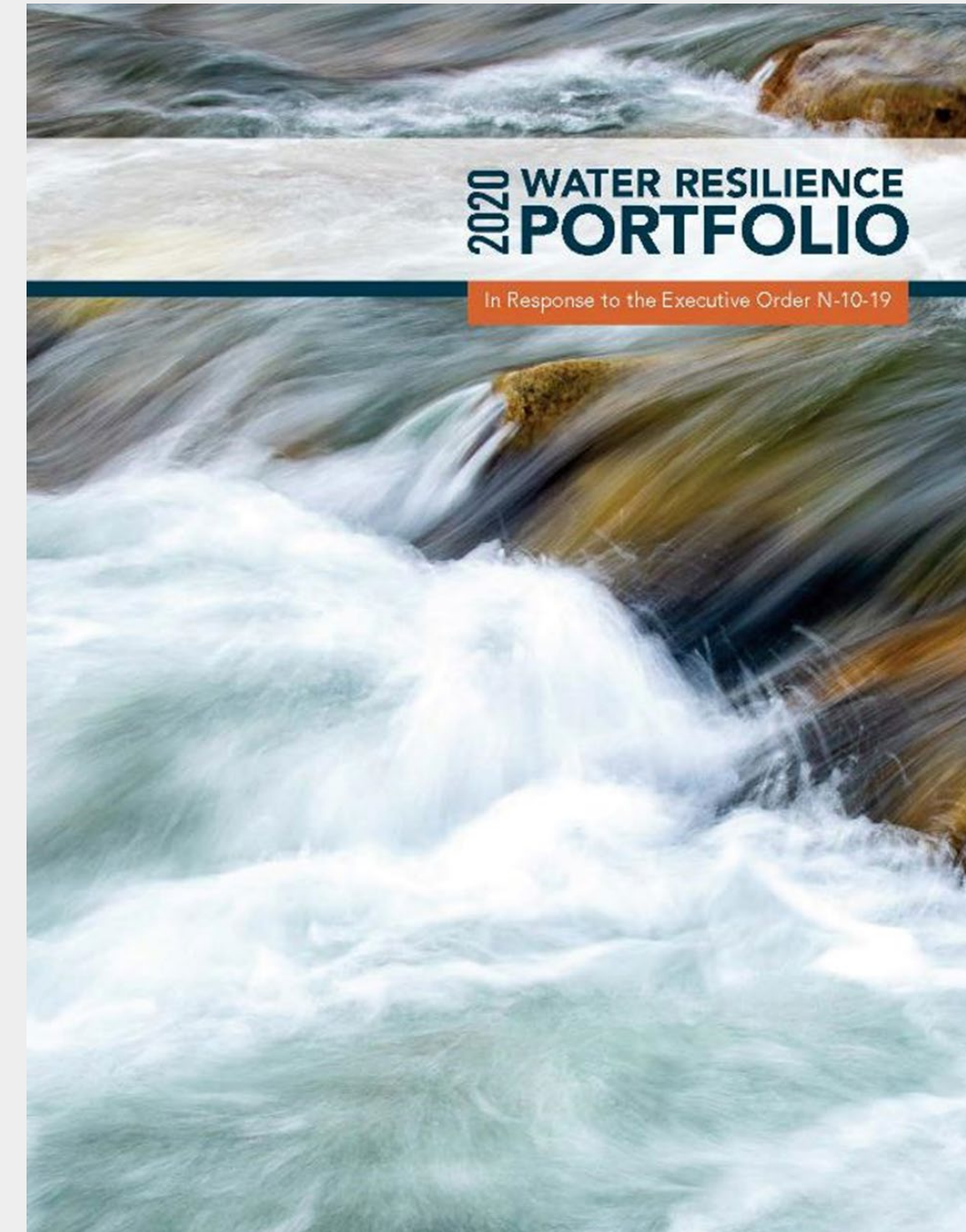
Newsom Administration Water Initiatives



Water Resilience Portfolio

Advancing Regional Networks With State Support

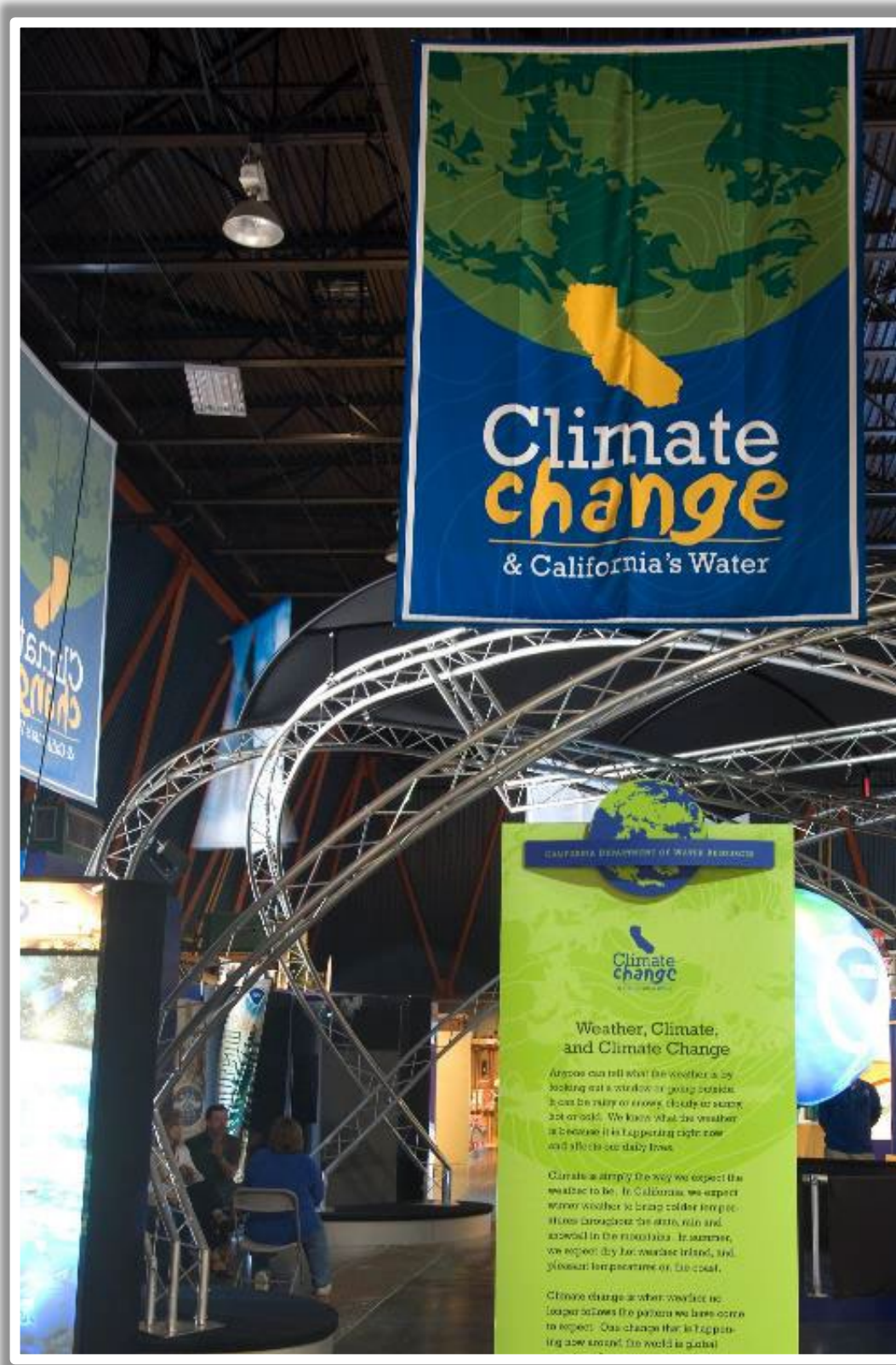
- ❖ **Maintain & Diversify Water Supplies**
 - ✓ Diversify regional supplies to strengthen water security
- ❖ **Protect & Enhance Natural Systems**
 - ✓ Restore environmental health to sustain fish & wildlife
 - ✓ More adaptive & holistic environmental management
- ❖ **Build Connections**
 - ✓ Improve physical infrastructure to store, move & share water
 - ✓ Integrate water management with shared science, data & technology
- ❖ **Be Prepared**
 - ✓ Respond to flashier floods, deeper droughts & hotter temperatures



Principles of Water Resilience Portfolio

- ❖ **Prioritize** - *multi-benefit approaches* that meet multiple needs at once
- ❖ **Utilize** - *natural infrastructure* such as forests and floodplains
- ❖ **Embrace** - *innovation and new technologies*
- ❖ **Encourage** - *regional approaches* in watersheds
- ❖ **Incorporate** - *successful approaches* from other parts of the world
- ❖ **Integrate** - *investments, policies and programs* across state government
- ❖ **Strengthen Partnerships** - *with local, federal and tribal governments, water agencies and irrigation districts, and other stakeholders*

Water Resilience Portfolio Priorities



Water Supply, Quality, and Equity



Environmental Stewardship



Climate-Smart Agriculture



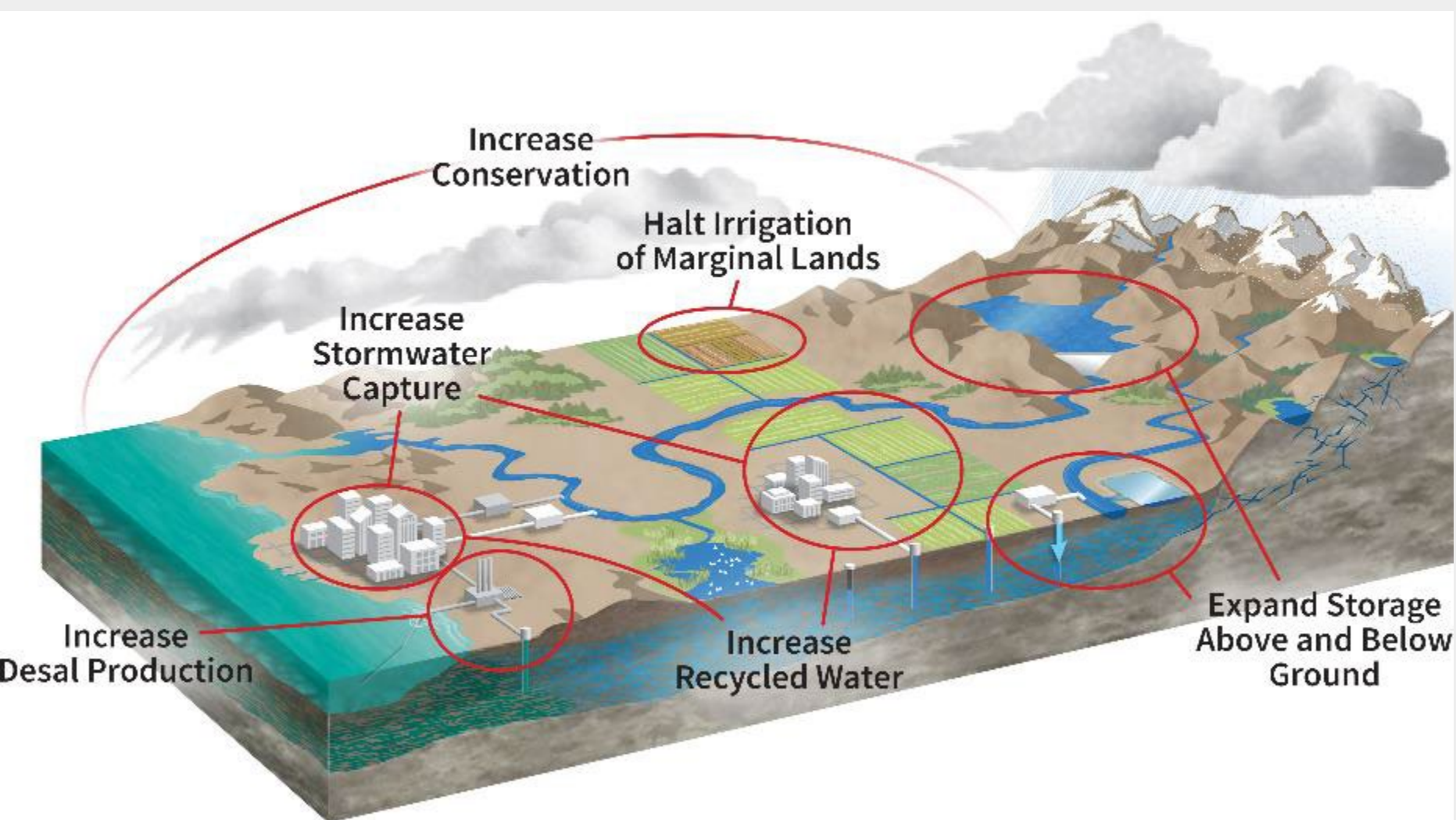
Disaster Preparedness and Response



**CALIFORNIA DEPARTMENT OF
WATER RESOURCES**

Governor's Water Supply Strategy

Set targets to offset increased evaporation from warmer temperatures & drier conditions



- 1. Develop new water supplies
 - Recycling, stormwater capture, desalination
- 2. Expand water storage above and below ground
- 3. Reduce water demand
- 4. Improve water forecasting, data, and management, including water rights modernization

	2030		2040	
Increase Recycled Water	.8 MAF	About 5 MAF	1.8 MAF	About 7 MAF
Increase Desal Production	28,000 AF		84,000 AF	
Increase Stormwater Capture	.25 MAF		.5 MAF	
Increase Conservation	.5 MAF		.5 MAF	
SUBTOTAL FOR RECYCLED, DESAL, STORMWATER AND CONSERVATION	1.6 MAF		2.9 MAF	
Expand Storage Above and Below Ground*	3.7 MAF		4 MAF	
Total	4.8 MAF		6.9 MAF	

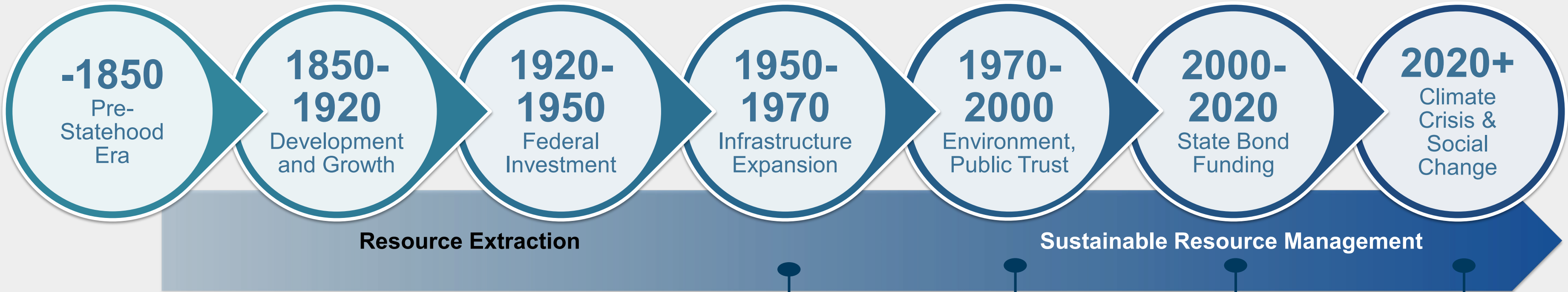
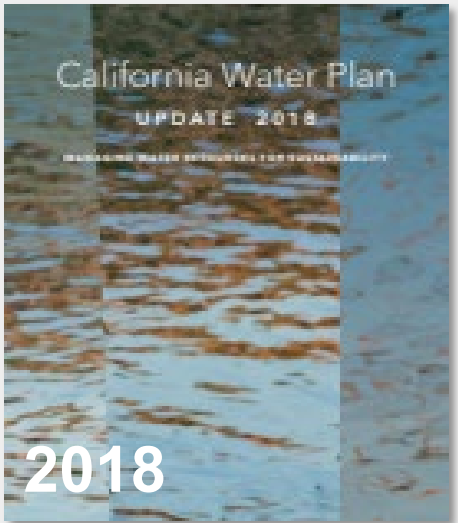
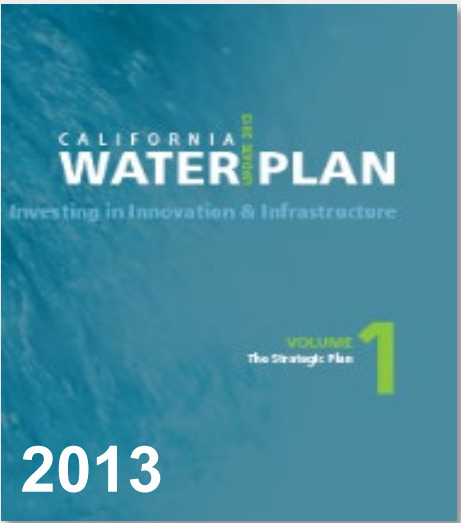
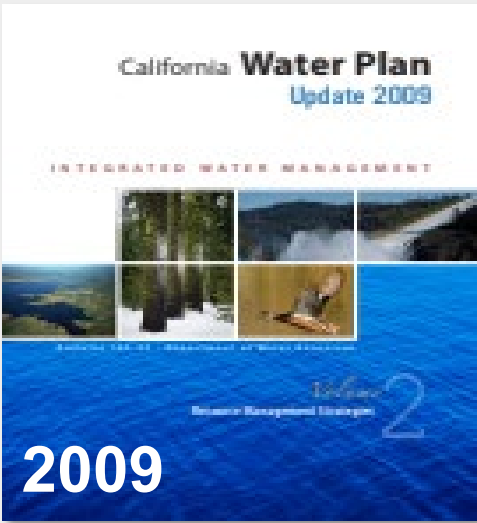
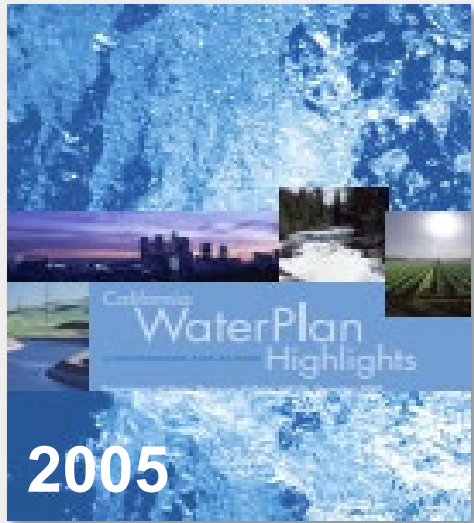
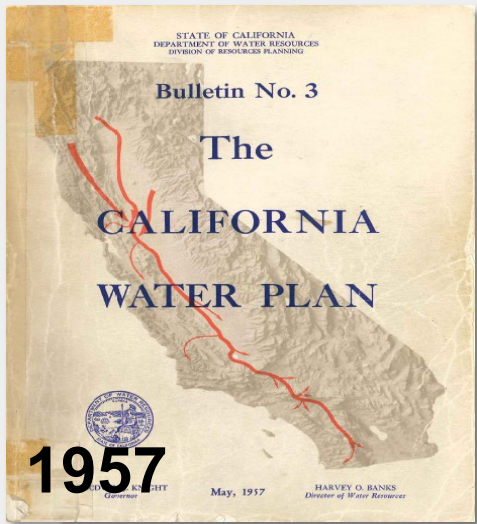
Moving Smarter & Faster

- ❖ State agency alignment
- ❖ Funding incentives for projects
- ❖ Expedited programmatic permitting process

California Water Plan & Update 2023



California Water Plan Through the Years



CALIFORNIA DEPARTMENT OF
WATER RESOURCES

SWP
Development

Integrated Water
Management

Watershed
Resilience &
Sustainability

Climate
Urgency &
Racial Equity

The California Water Plan -- A statewide strategic plan for:

1. Understanding current & future conditions
2. Understanding what Californians value
3. Identifying challenges, risks, and opportunities
4. Leadership, analysis, and local assistance
5. Recommendations and tools to meet the moment



21st Century Water Plan Updates are Pioneering and Transformative

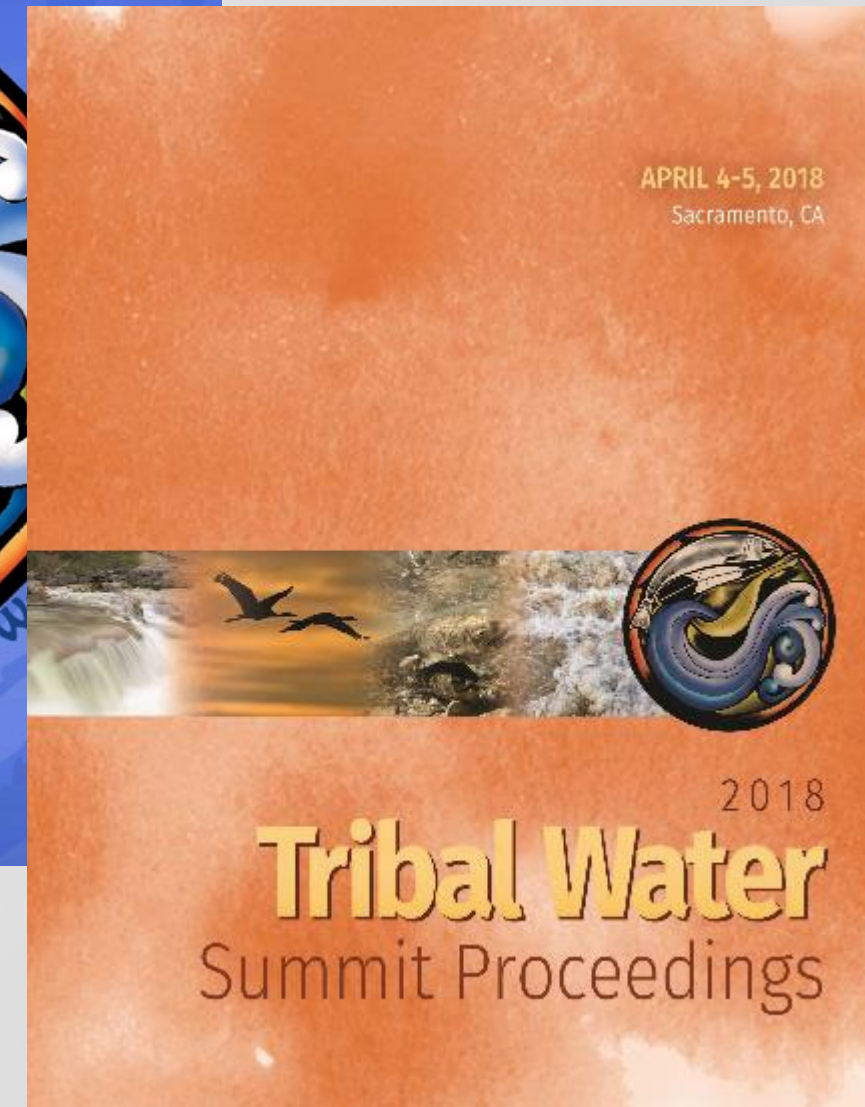
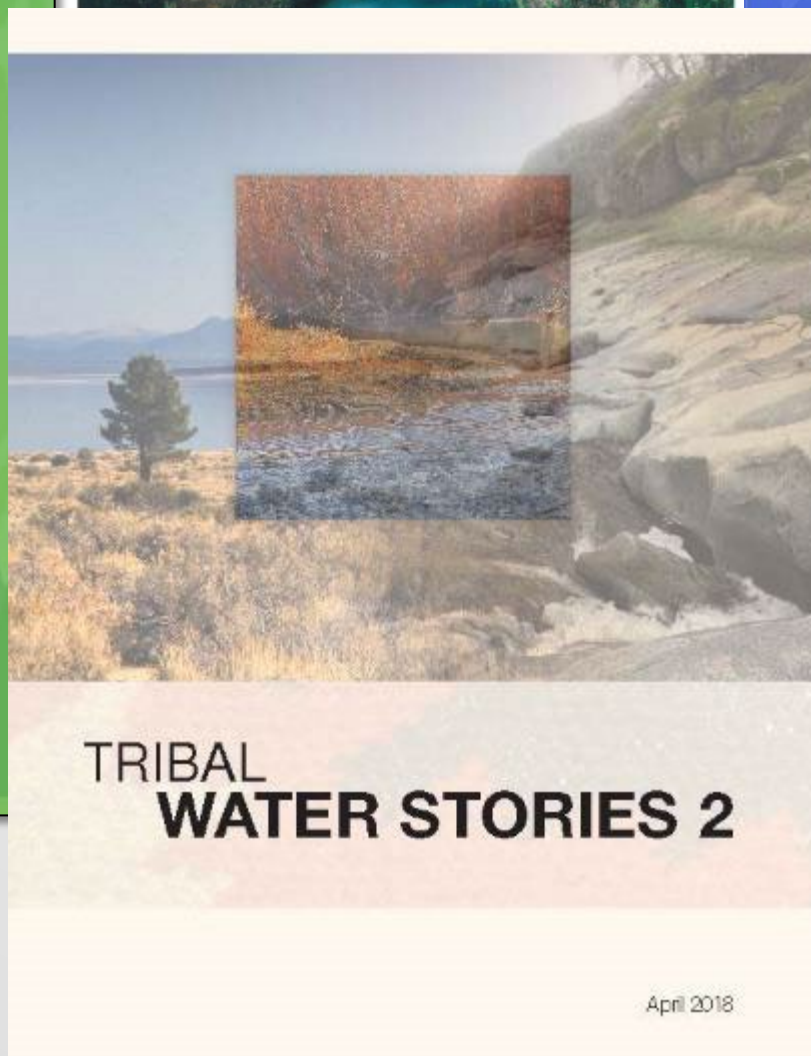
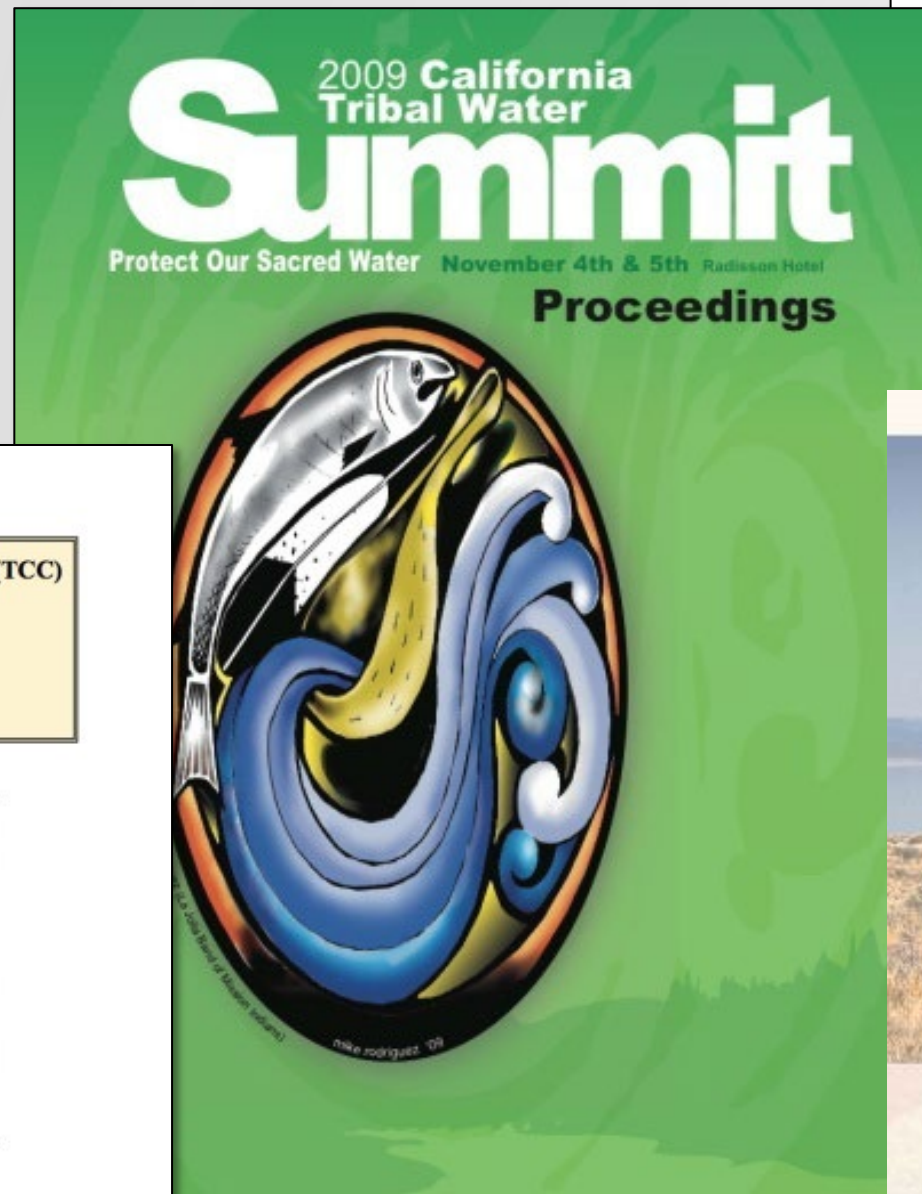
- Expanded participation & transparency
- Climate change impacts & adaptation
- Integrated watershed management
- Environmental stewardship & natural infrastructure
- Water management for resilience & sustainability – Environment / Economy / Equity
- Innovation roadmap for data, analysis, and R&D
- Informing water policies & decisions



CALIFORNIA DEPARTMENT OF
WATER RESOURCES



CA Native American Tribes Participation Water Plan Updates & Water Summits 2009 - 2018



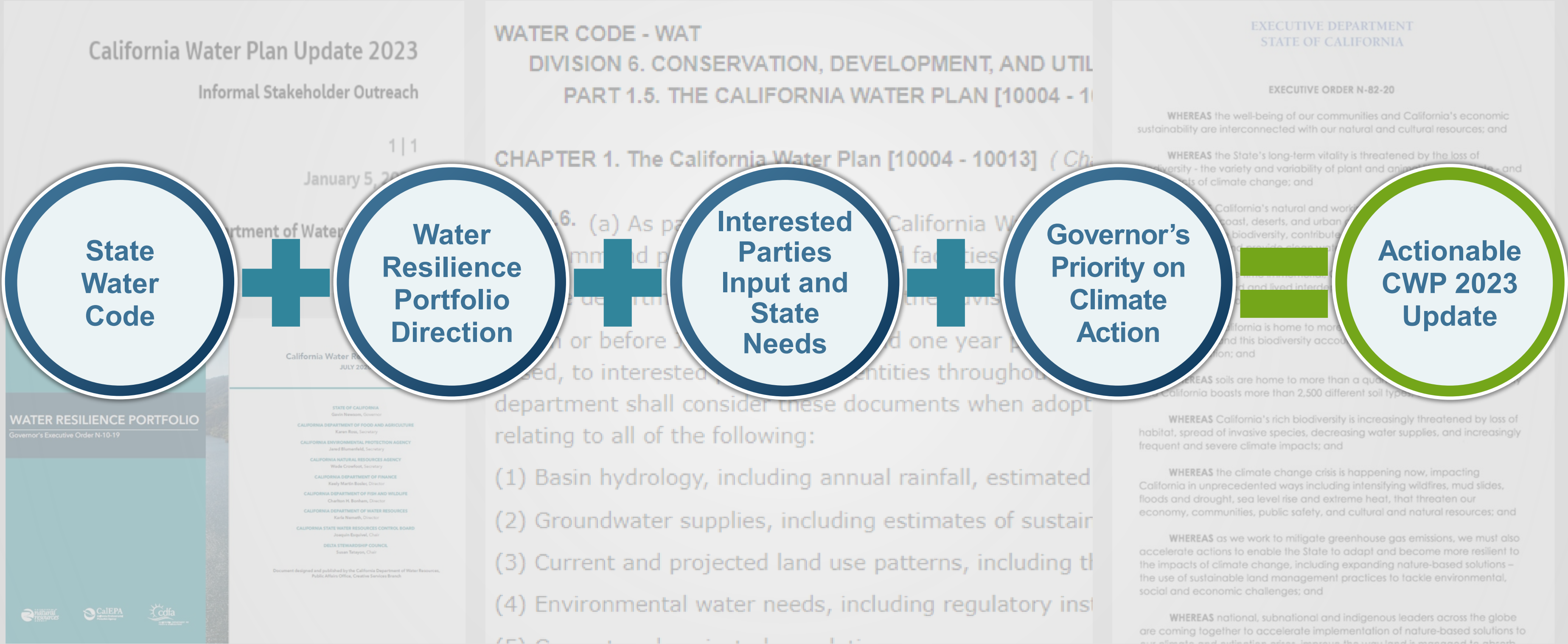
TRIBAL COMMUNICATION COMMITTEE (TCC)
WORKING DRAFT
TRIBAL COMMUNICATION PLAN
Summer 2008



Developed in support of the
CALIFORNIA WATER PLAN UPDATE 2009



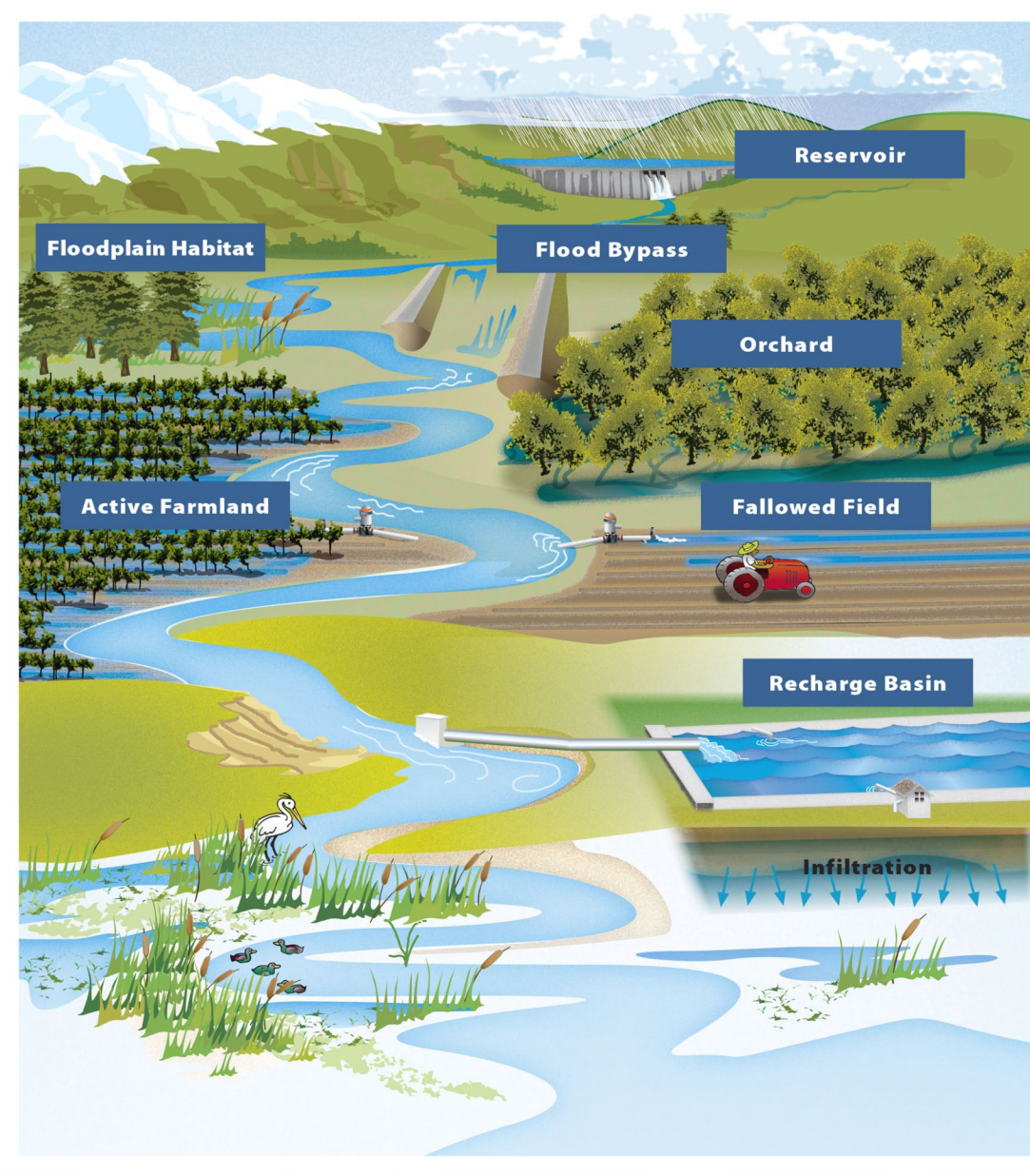
Context For Update 2023



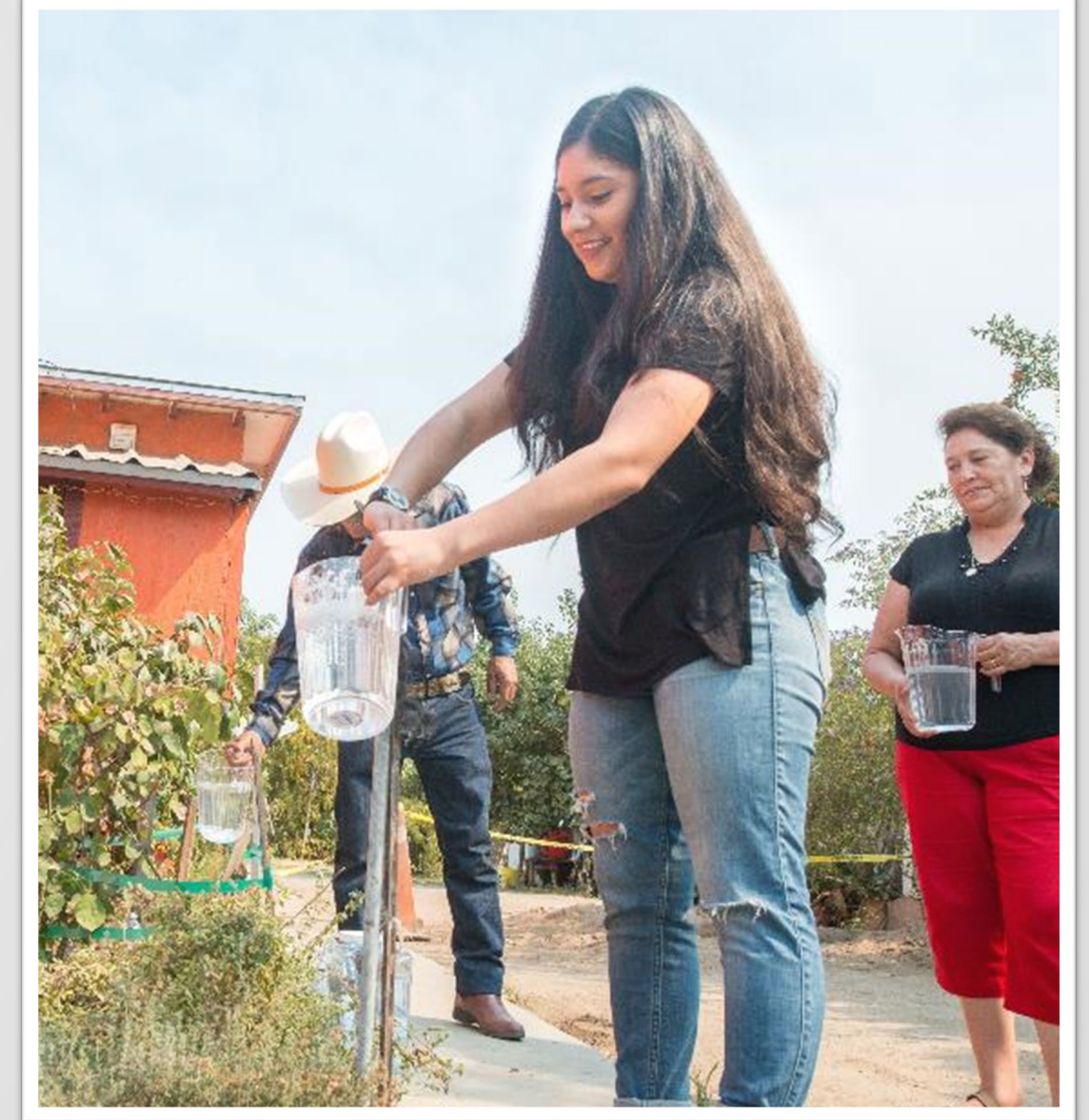
California Water Plan Update 2023

Advancing Water Resilience Portfolio Themes
With State Agency Alignment & Watershed Networks
Climate Vulnerability &
Adaptation

Watershed Resilience



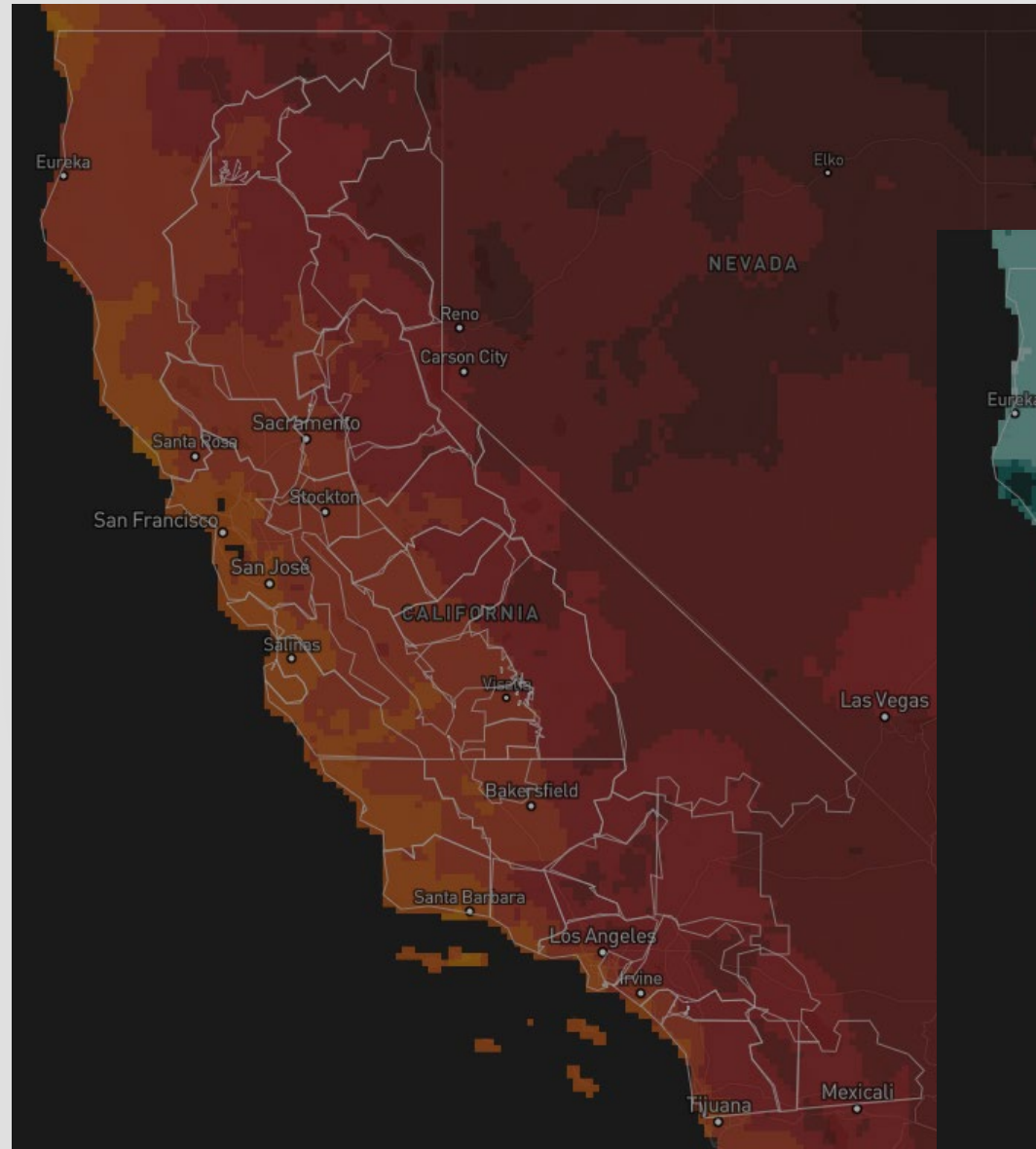
Equity in Water Management



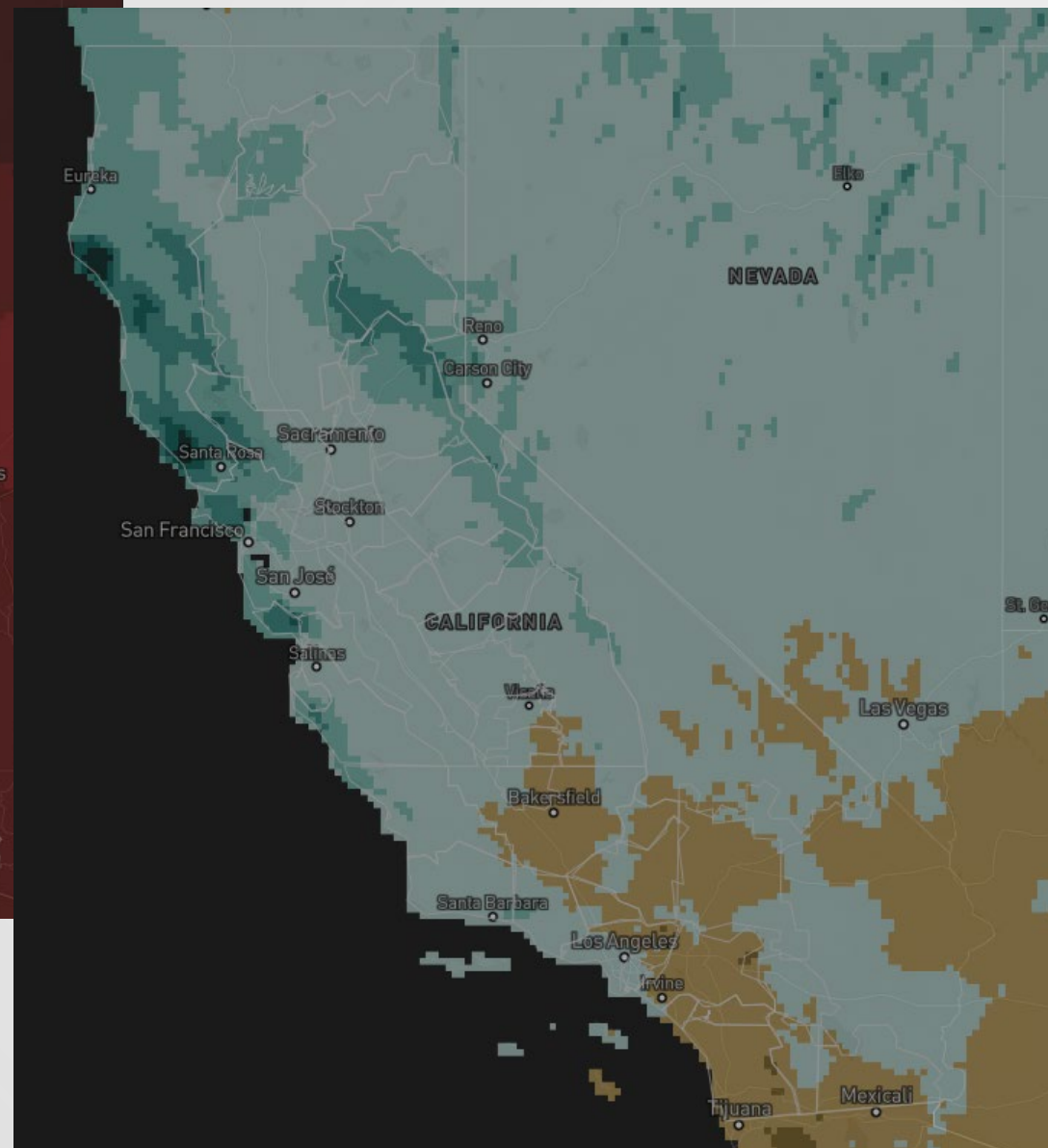
CALIFORNIA DEPARTMENT OF
WATER RESOURCES

Improving Understanding of Climate Vulnerabilities

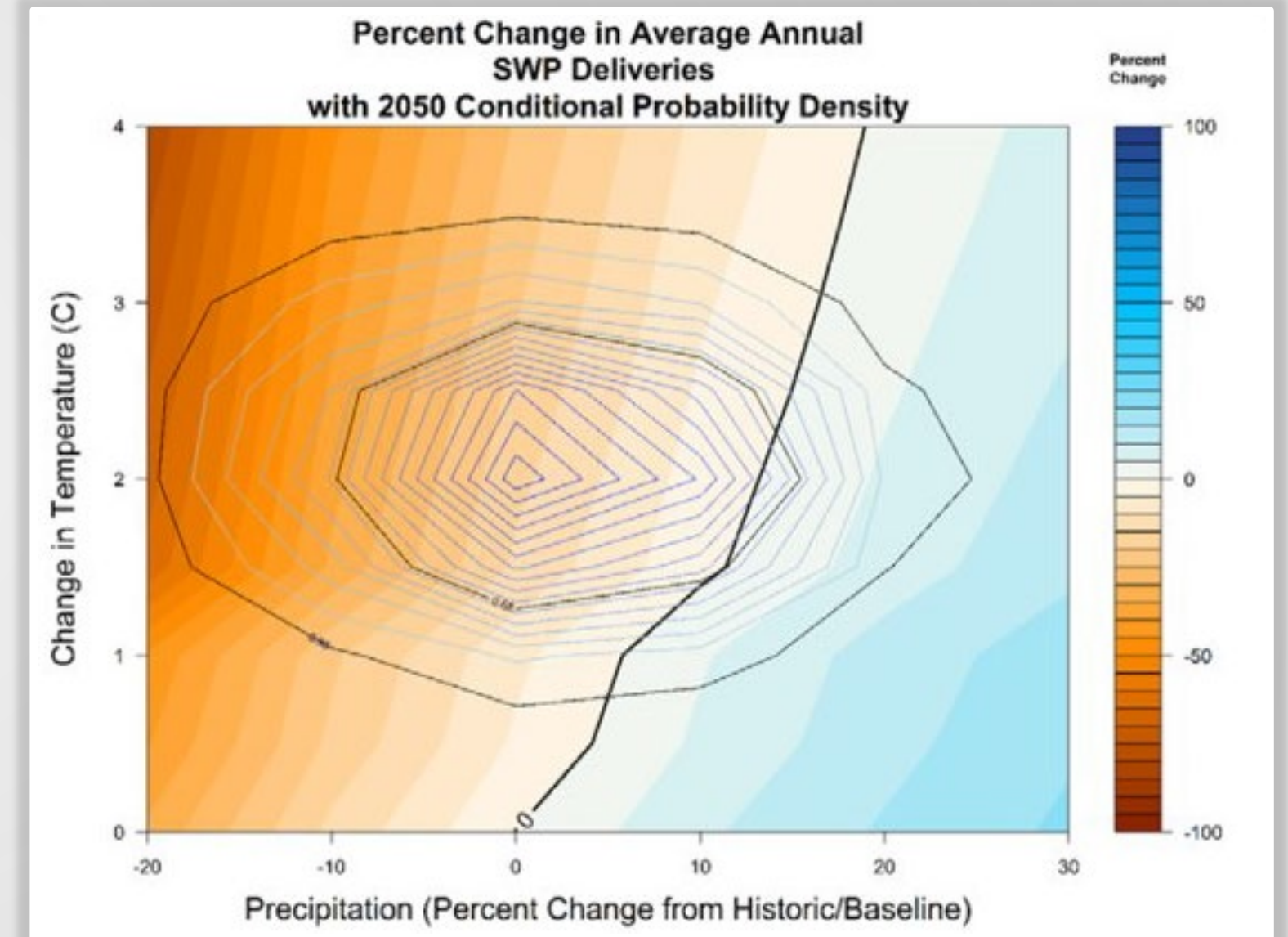
Warming is Accelerating



Projections of Precipitation Changes are Varied



Robust Analytical Approaches and Tools to Understand Vulnerabilities



An aerial photograph showing the Merced River Watershed. The watershed boundary is outlined in a thick red line. The terrain is rugged and mountainous, with a mix of brown, tan, and green colors indicating different vegetation and geological features. The river itself is visible as a winding line through the landscape. The overall view is from a high angle, looking down on the watershed area.

Ecosystem opportunities

Networks

Improving Equity in Water Management

Major Theme for Water Plan Update 2023



Resilience Requires Big Collaboration, Agency Alignment & Sector Co-Management

Integrated Watershed Management (IWM)

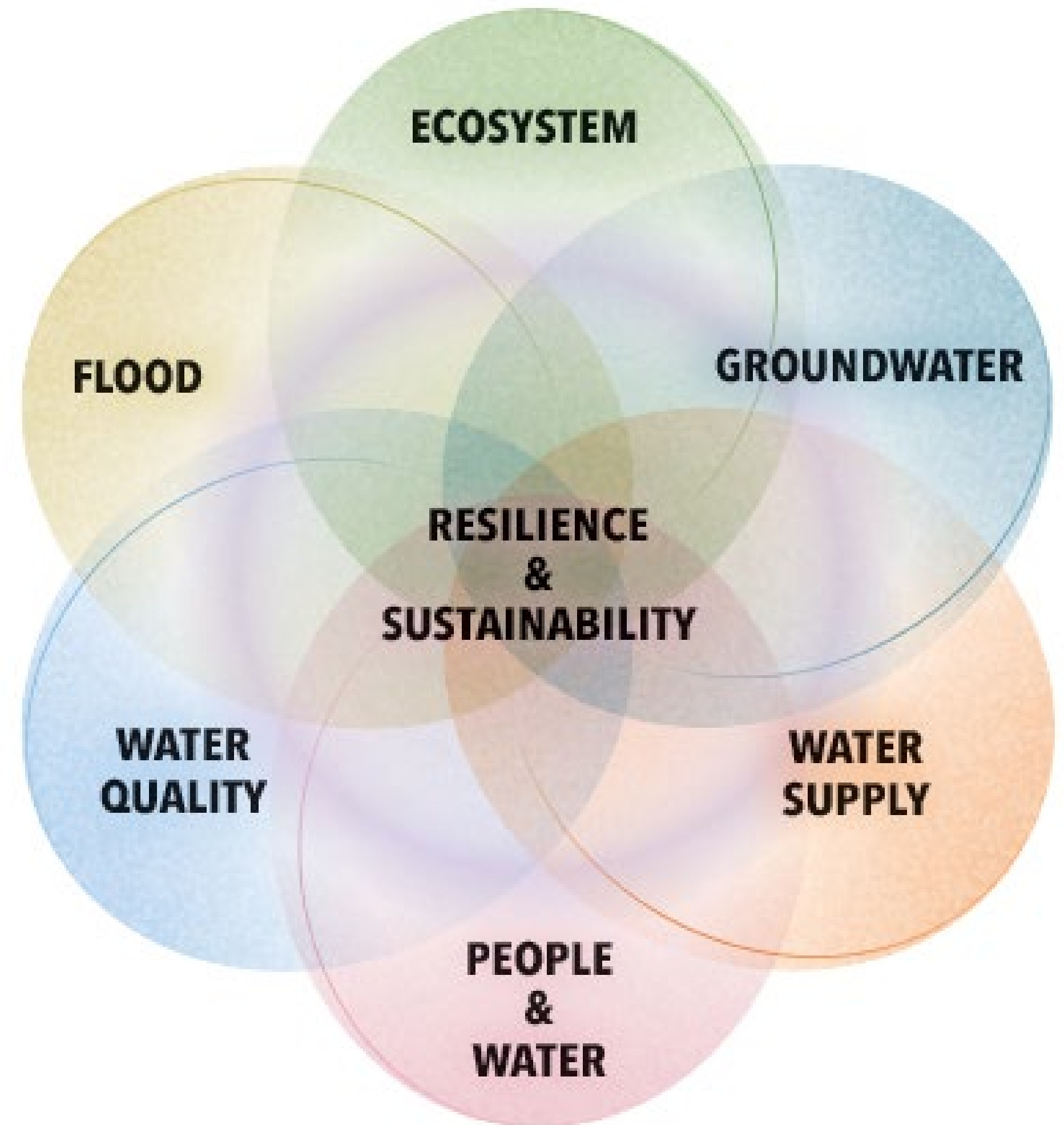
~~~

Multi-Sector Collaboration

Multi-Discipline Planning

Multi-Benefit Projects

Multi-Fund Investments





# 30+ Resource Management Strategies

## *Tools for Diversifying Regional Water Portfolios*

### **Reduce Water Demand**

- Agricultural Water Use Efficiency
- Urban Water Use Efficiency

### **Improve Operational Efficiency & Transfers**

- Conveyance – Delta
- Conveyance – Regional / Local
- System Reoperation
- Water Transfers

### **Increase Water Supply**

- Conjunctive Management & Groundwater Storage
- Desalination – Brackish & Seawater
- Precipitation Enhancement
- Recycled Municipal Water
- Surface Storage – CALFED
- Surface Storage – Regional / Local

### **Improve Flood Management**

- Flood Management

### **Improve Water Quality**

- Drinking Water Treatment & Distribution
- Groundwater / Aquifer Remediation
- Matching Quality to Use
- Pollution Prevention
- Salt & Salinity Management
- Urban Stormwater Runoff Management

### **Practice Resource Stewardship**

- Agricultural Lands Stewardship
- Ecosystem Restoration
- Forest Management
- Land Use Planning & Management
- Recharge Areas Protection
- Sediment Management
- Watershed Management

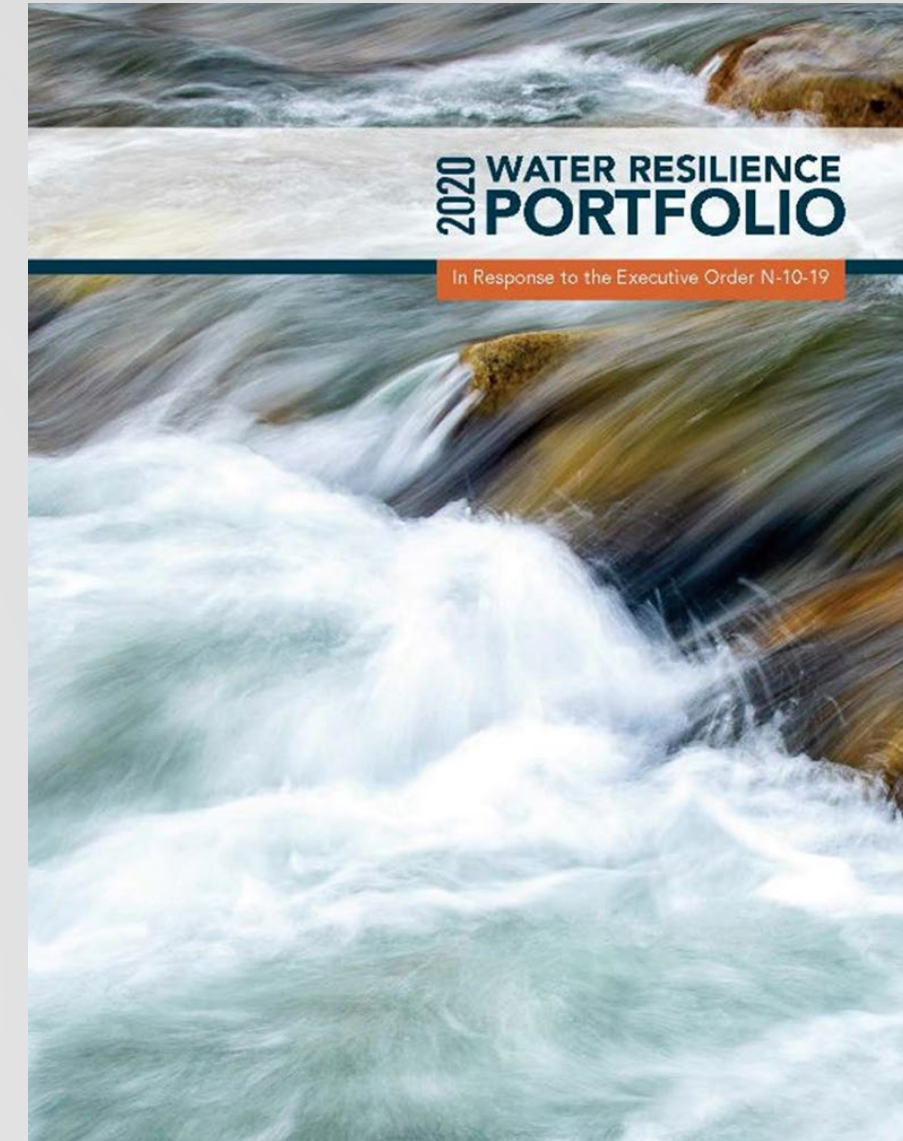
### **People & Culture**

- Economic Incentives (Loans, Grants & Water Pricing)
- Outreach & Engagement
- Water & Culture
- Water-Dependent Recreation



# Communication & Engagement Plan to Align & Build Support for Update 2023

- Water Resilience Portfolio Principals
- Core State Agency Team
- State & Federal Agency Networks
- Tribal Advisory Committee
- Policy Advisory Committee
- Topic and place-based workshops





# Update 2023 Schedule



# Access California Water Plan Information

❖ [Visit the Web Portal](#)

❖ [Subscribe to CA Water Plan eNews](#)

The screenshot shows the California Department of Water Resources website. The header includes the department's name and a navigation bar with icons for Water Basics, What We Do, Programs, Work with Us, News, Library, and Search. The main content area is titled 'Update 2023' and features a large image of a river landscape. To the right of the image is a text block describing the California Water Plan (CWP), updated every five years, as the State's strategic plan for sustainably and equitably managing and developing water resources. Below this is a 'Contact Us' section with a form and a 'Tags' section with buttons for 'California Water Pla...', 'Groundwater Manageme...', 'Integrated Regional...', 'Climate Change', 'Tribal', and 'Sustainability'. At the bottom, there is a section titled 'Intended Outcomes of Update 2023' with a list of bullet points: 'Promote Climate Change Adaptation', 'Support California's Regions', and 'Strengthen Water Equity'. Below this is a section titled 'Key Elements Shaping the Process & Context of Update 2023' with a diagram showing the flow from 'State Water Code' and 'Water Resilience Portfolio Direction' through 'Interested Parties Input and State Needs' and 'Governor's Priority on Climate Action' to 'Actionable CWP 2023 Update'.

The screenshot shows the California Water Plan eNews newsletter. The header features a circular diagram with the words 'ECOSYSTEM', 'GROUNDWATER', 'WATER SUPPLY', 'PEOPLE & WATER', 'WATER QUALITY', and 'FLOOD' around a central 'RESILIENCE & SUSTAINABILITY' circle. The title 'CALIFORNIA WATER PLAN eNEWS' is prominently displayed. The main content area is titled 'Wednesday Update' and dated 'April 6, 2022'. It includes a section titled 'Roundtable discusses updated climate adaptation strategy' with a link to a video of the roundtable. Below this is a section titled 'New coalition will standardize water-related data in the U.S.' with a link to the 'Internet of Water (IoW) Initiative'. The final section is titled 'CNRA updates progress on Cutting Green Tape initiative' with a link to a report titled 'Transforming Environmental Restoration: Progress on the Cutting Green Tape Initiative'. The newsletter also features a small graphic of a pair of scissors cutting a ribbon.

<https://water.ca.gov/programs/california-water-plan/update-2023>



CALIFORNIA DEPARTMENT OF  
WATER RESOURCES

To subscribe [visit DWR email subscription page and select 'Water Plan eNews' option.](#)



# Questions & Comments



**Kamyar Guivetchi**

Manager, Division of Planning  
CA Department Water Resources

# Hazard Mitigation Assistance (HMA) Grants

## FLOOD MITIGATION ASSISTANCE (FMA)

**Purpose:** FEMA funded, State administered program and **not** directly tied to a disaster declaration; reduce NFIP claims

**Cycle:** Annual

**Local Match:** 0%, 10%, or 25%

**FY 2022 Funding\*:** \$800M - nationally competitive program

## BUILDING RESILIENT INFRASTRUCTURE AND COMMUNITIES (BRIC)

**Purpose:** FEMA funded, State administered program and **not** directly tied to a disaster declaration; high-impact, neighborhood scale projects

**Cycle:** Annual

**Local Match:** At least 25% or 10% for economically disadvantaged rural communities (EDRC)

**FY 2022 Funding\*:** ~\$2.3B - nationally competitive program

## HAZARD MITIGATION GRANT PROGRAM (HMGP)

**Purpose:** FEMA funded, State administered program and directly tied to a disaster declaration; break cycle of repetitive losses

**Cycle:** Post-Disaster

**Local Match:** 25%

**FY 2022 Funding\*:** Varies year to year - competitive within each state

\* Federal Share



# Other Funding Opportunities

## HAZARD MITIGATION GRANT PROGRAM (HMGP)

**Purpose:** FEMA funded, State administered program and directly tied to a disaster declaration; break cycle of repetitive losses

**Cycle:** Post-Disaster

**Local Match:** 25%

**FY 2022 Funding:** Varies year to year  
- competitive within the state

## HAZARD MITIGATION POST-FIRE

**Purpose:** FEMA funded, State administered program and directly tied to a Fire Management Assistance Grant (FMAG); break cycle of repetitive losses due to wildfire

**Cycle:** Annually if FMAG declared

**Local Match:** 25%

**FY 2022 Funding:** Varies

## PREPARE CA JUMPSTART

**Purpose:** State Funded for local capacity building for socially vulnerable and high hazard communities

**Cycle:** New program based on California State legislation; not anticipated for CA FY 22/23

**Local Match:** none

**CA FY 21/22 Funding:** \$15,000,000

# Prepare California JumpStart- Round Two

Prepare California JumpStart is a competitive grant program that provides State funding to eligible socially vulnerable and high hazard risk communities. Through this grant program, eligible communities can augment staffing by funding a Chief Resilience Officer, or a position of similar scope and title, thereby increasing capacity to develop local initiatives that foster mitigation, preparedness, and recovery activities, and mitigation project scoping. Each application may be up to \$1 million dollars in State funds.

- ✓ **Funding agency** Cal OES
- ✓ **Apply as** Applicant
- ✓ **Project cost to applicant** Fully funded by Cal OES (i.e., no local cost share for applicant)
- ✓ **Funding Cap** Applications may not receive more than \$1 million in state funds
  
- ✓ **Period of Performance** 60 months
- ✓ **Benefit-Cost Analysis** Not required
- ✓ **Eligible Activities** Staff augmentation and a limited number of supplies and materials
  
- ✓ **Procurement** State and local requirements
- ✓ **Award** Reimbursement based; no advanced funding
- ✓ **How to apply** Email application and supporting documentation to [PrepareCAJumpStart@caloes.ca.gov](mailto:PrepareCAJumpStart@caloes.ca.gov)
- ✓ **Questions** [PrepareCAJumpStart@caloes.ca.gov](mailto:PrepareCAJumpStart@caloes.ca.gov)

## Round 1 Awardees

### PREPARE CALIFORNIA 'JUMPSTART' GRANTS AWARDED

Cal OES Awards Resiliency Funding to  
Disaster Vulnerable Communities



| GRANTEE                     | AWARD AMOUNT |
|-----------------------------|--------------|
| Hoop Valley Tribe           | \$999,850    |
| Mendocino County            | \$992,000    |
| Happy Camp Community Action | \$920,506    |
| City of Barstow             | \$732,000    |
| Lake County                 | \$636,545    |
| City of Concord             | \$175,000    |



# Prepare California JumpStart Eligible Applicants



Eligible applicants considered socially vulnerable and high hazard risk community according to [Cal OES Hazard Mitigation Assistance Division's Vulnerability Map](#)

This can include:

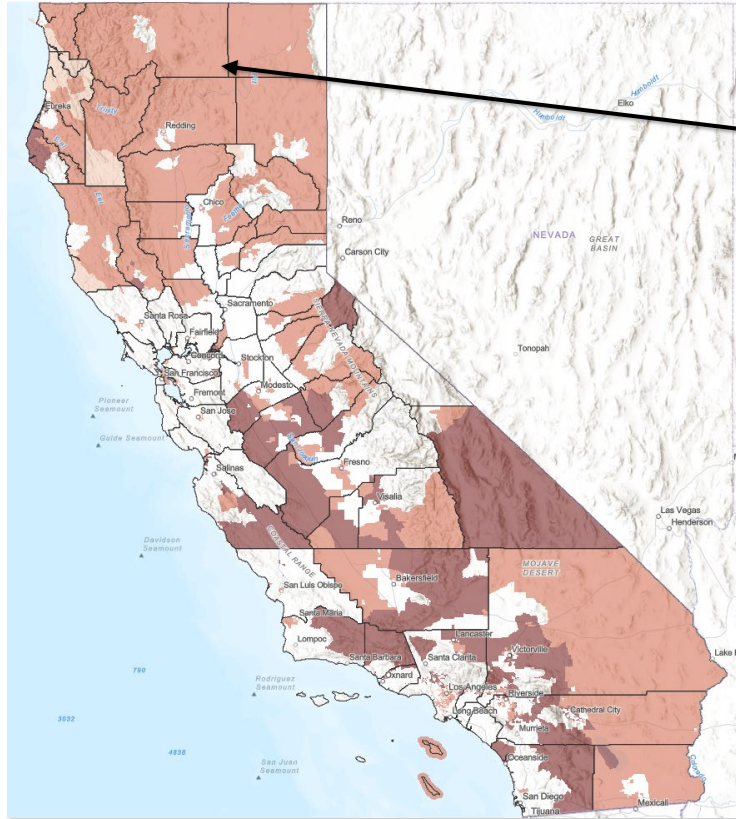
- City/Local Jurisdiction
- County
- Special District
- Tribal Government



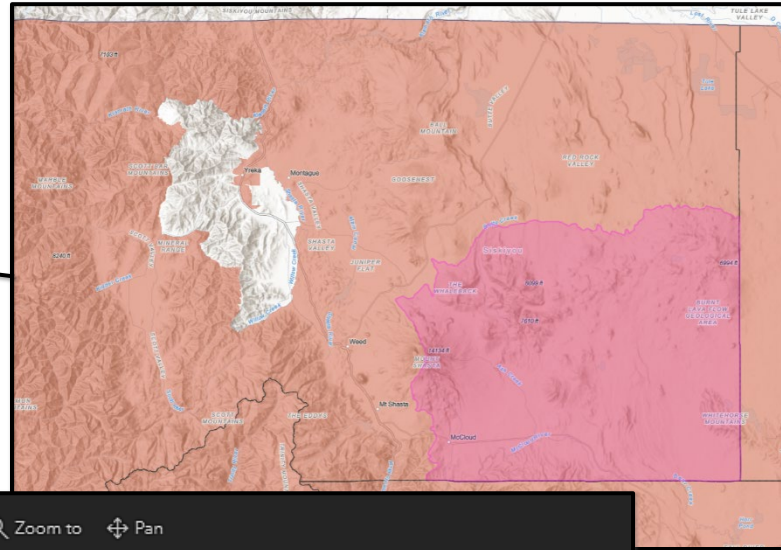
Applicants must have a FEMA-approved local or tribal hazard mitigation plan in order to be eligible to apply.

If eligible applicants do not meet the LHMP requirement, the county in which they are located or where the work is located must have a FEMA approved mitigation plan.

# Prepare California JumpStart Map



Cal OES Hazard Exposure and Social Vulnerability Heat Map



| OES Multiple Hazards Master Layer (Update)       |                                              |
|--------------------------------------------------|----------------------------------------------|
| GEOID                                            | Census Tract 12, Siskiyou County, California |
| Fire percentile                                  | 0.97                                         |
| Flood percentile                                 | 0.54                                         |
| Drought percentile                               | 0.32                                         |
| Heat percentile                                  | 0.43                                         |
| Earthquake percentile                            | 0.02                                         |
| Total hazard percentile                          | 0.45                                         |
| SVI percentile                                   | 0.48                                         |
| Shake potential flag                             | 0                                            |
| Ratio of median household income to state median | 0.49                                         |

## Eligibility Criteria

- Above 0.70 in the SVI percentile
- or –
- Less than 0.80 in the “ratio of median household income to state median”
- and –
- Above 0.85 in any of the five hazard categories,
- or –
- Above 0.70 in overall hazard exposure,
- or –
- Have 1g or higher in the shake potential flag category



# Prepare California JumpStart Application Criteria

- ✓ The primary activity eligible is the hiring, or continuation of services, of a Chief Resilience Officer or position of similar scope of services and authority.
- ✓ The position must increase capacity to develop local initiatives that foster resilience and mitigation project scoping, as well as planning, activities, and outreach for mitigation, preparedness, and recovery.
- ✓ There must be tangible deliverables and initiatives that directly and primarily benefit a qualified socially vulnerable and high hazard risk community.
- ✓ Project scoping must lead to a Hazard Mitigation Assistance (HMA) subapplication during the period of performance.
- ✓ Application cost estimate cannot exceed \$1 million.
- ✓ Period of performance cannot exceed 60 months (five years).
- ✓ Must comply with all applicable California and local procurement laws, regulations, and policies.

# Upcoming Webinar Schedule

## JumpStart Webinar Hours

- September 22, 2022 @ 10am -11am PST

## JumpStart Office Hours

- September 23, 2022 @ 10am -11am PST
- September 30, 2022 @ 10am -11am PST
- October 6, 2022 @ 10am -11am PST
- October 7, 2022 @ 10am -11am PST



# Next Steps for Potential Applicants

- Attend any State Cal OES sponsored JumpStart webinars
- Sign up for Cal OES [email notifications](#)
- Visit the [Cal OES HMA Website](#) for funding opportunities, timelines, and priorities for funding
- Refer to [Notice of Funding Opportunity](#) for more information during application development

**Reach out to [prepareCAJumpStart@caloes.ca.gov](mailto:prepareCAJumpStart@caloes.ca.gov) if you have any questions.**